

## 04-12 PARKING BRAKE SYSTEM

PARKING BRAKE INSPECTION . . . . .	04-12-1
PARKING BRAKE ADJUSTMENT . . . . .	04-12-1
PARKING BRAKE LEVER REMOVAL/INSTALLATION . . . . .	04-12-1

Parking Brake Switch Installation Note . . . . .	04-12-1
PARKING BRAKE CABLE REMOVAL/INSTALLATION . . . . .	04-12-2

### PARKING BRAKE INSPECTION

A5U041244000W01

1. Depress the brake pedal several times.
2. Verify that the stroke is as specified when the parking brake lever is pulled with a force of **98 N {10 kgf, 22 lbf}**.

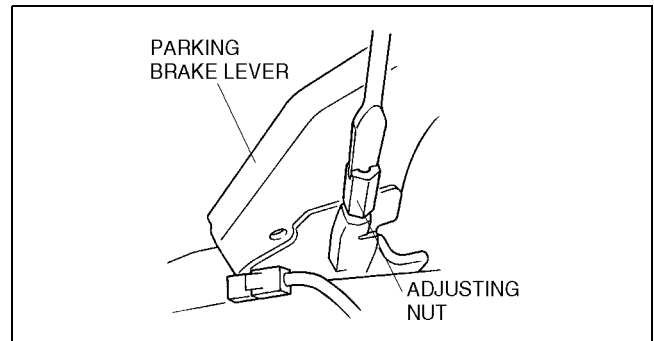
**Stroke**  
**5—7 notches**

04-12

### PARKING BRAKE ADJUSTMENT

A5U041244000W02

1. Depress the brake pedal several times.
2. Remove the cover.
3. Turn the adjusting nut to adjust the lever stroke.
4. Pull the parking brake lever one notch, and verify that the parking brake warning light comes on. Release the parking brake.
5. Turn the wheels by hand, and verify that the brakes do not drag.



Z5U0412W101

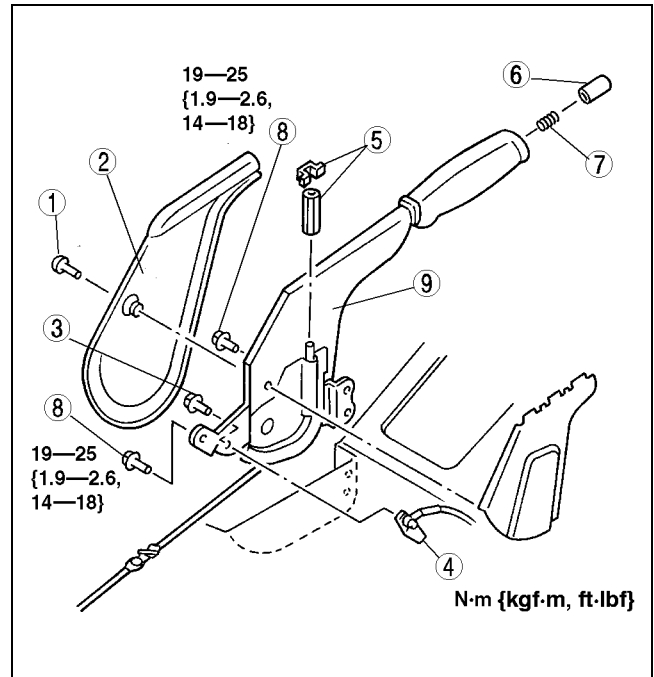
### PARKING BRAKE LEVER REMOVAL/INSTALLATION

A5U041244000W03

1. Remove in the order indicated in the table.

1	Screw
2	Cover
3	Bolt
4	Parking brake switch (See 04-12-1 Parking Brake Switch Installation Note)
5	Adjusting nut and clip
6	Release button
7	Spring
8	Bolt
9	Parking brake lever

2. Install in the reverse order of removal.
3. After installation, adjust the parking lever stroke.



Z5U0412W102

### Parking Brake Switch Installation Note

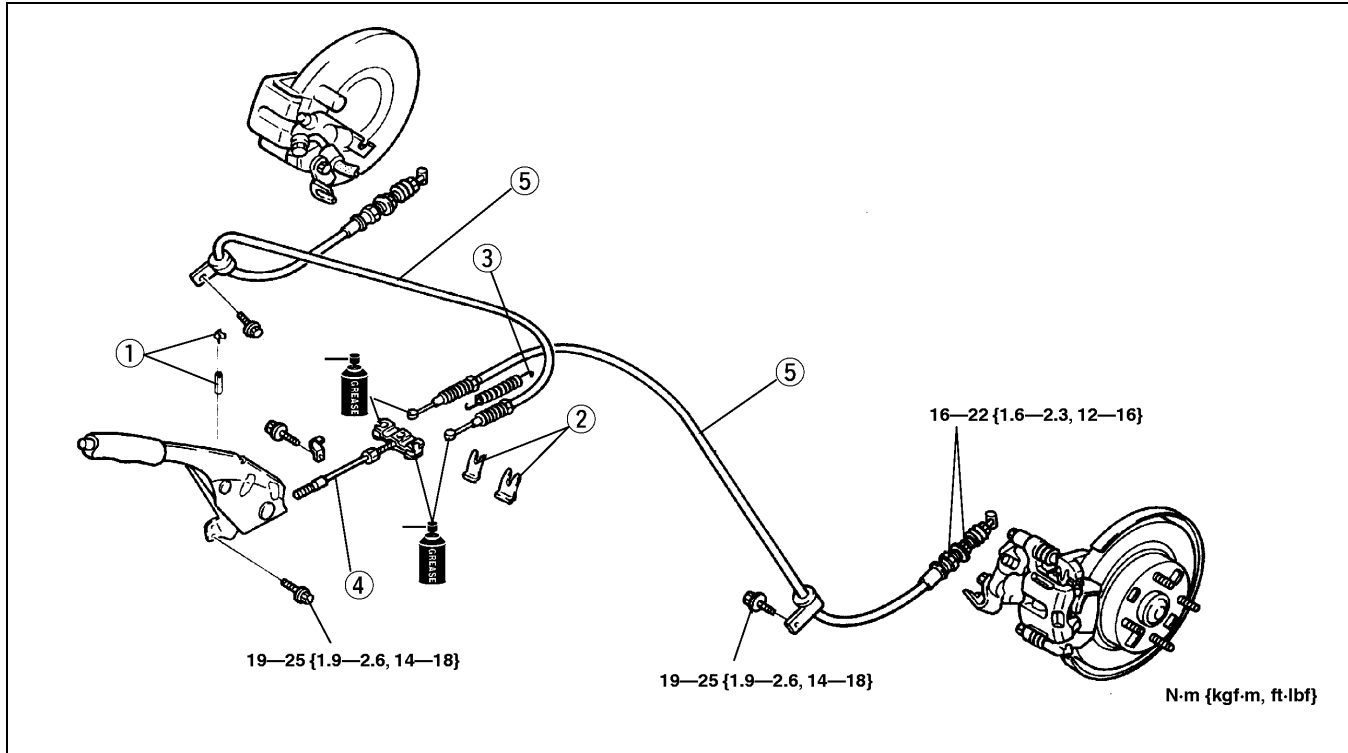
1. Install the parking brake switch so that it contacts the parking brake lever when the lever is fully released.
2. Turn the ignition switch to ON, and verify that the parking brake warning light illuminates with the lever pulled up one notch.

## PARKING BRAKE SYSTEM

### PARKING BRAKE CABLE REMOVAL/INSTALLATION

A5U041244410W01

1. Remove the exhaust pipe heat insulator.
2. Remove in the order indicated in the table.
3. Install in the reverse order of removal.
4. After installation:
  - (1) Adjust the parking brake lever stroke.
  - (2) Depress the brake pedal a few times.
  - (3) Verify that the rear brakes do not drag while the wheels are rotated by hand.



X5U412WA1

1	Adjusting nut and clip
2	Clip
3	Spring

4	Front cable
5	Rear cable