

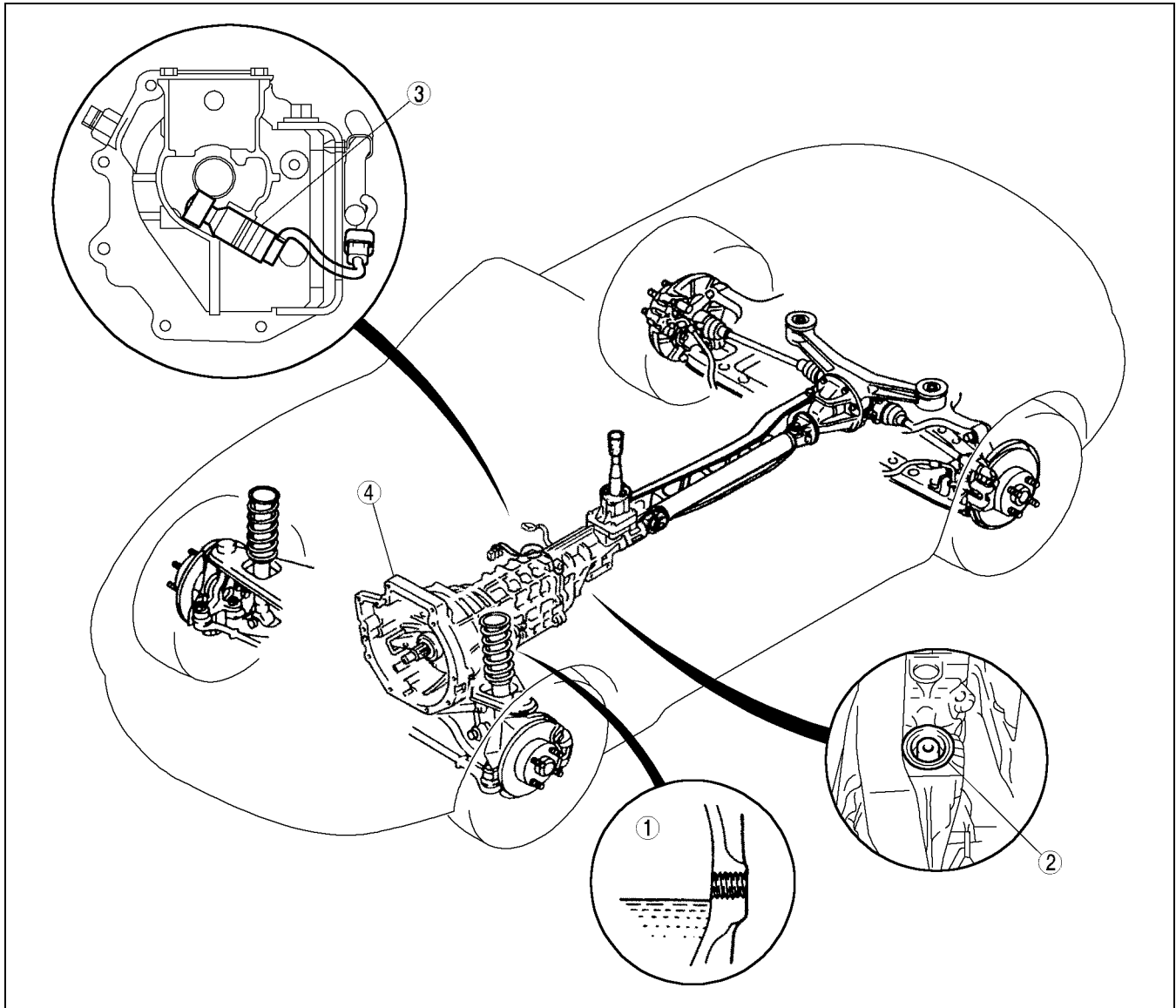
05-11B MANUAL TRANSMISSION [Y16M-D]

MANUAL TRANSMISSION [Y16M-D] LOCATION INDEX
 INDEX 05-11B-1
 TRANSMISSION OIL INSPECTION [Y16M-D] 05-11B-2
 TRANSMISSION OIL REPLACEMENT [Y16M-D] 05-11B-2
 OIL SEAL (REAR) REPLACEMENT

[Y16M-D].....05-11B-3
 VEHICLE SPEEDOMETER SENSOR REMOVAL/INSTALLATION [Y16M-D].....05-11B-3
 VEHICLE SPEEDOMETER SENSOR INSPECTION [Y16M-D].....05-11B-3
 MANUAL TRANSMISSION REMOVAL/INSTALLATION [Y16M-D].....05-11B-3

MANUAL TRANSMISSION [Y16M-D] LOCATION INDEX

A5U051101025W03



05-11B

Z5U0511WA0B

1	Transmission oil (See 05-11B-2 TRANSMISSION OIL INSPECTION [Y16M-D]) (See 05-11B-2 TRANSMISSION OIL REPLACEMENT [Y16M-D])
2	Oil seal (See 05-11B-3 OIL SEAL (REAR) REPLACEMENT [Y16M-D])

3	Vehicle speedometer sensor (See 05-11B-3 VEHICLE SPEEDOMETER SENSOR REMOVAL/INSTALLATION [Y16M-D]) (See 05-11B-3 VEHICLE SPEEDOMETER SENSOR INSPECTION [Y16M-D])
4	Manual transmission (See 05-11B-3 MANUAL TRANSMISSION REMOVAL/INSTALLATION [Y16M-D])

MANUAL TRANSMISSION [Y16M-D]

TRANSMISSION OIL INSPECTION [Y16M-D]

A5U051127001W03

1. Place the vehicle on level ground.
2. Remove the filler plug A.
3. Verify that the oil is at the brim of the filler plug hole as shown.
 - If it is low, add the specified oil from the filler plug hole.

Specified oil

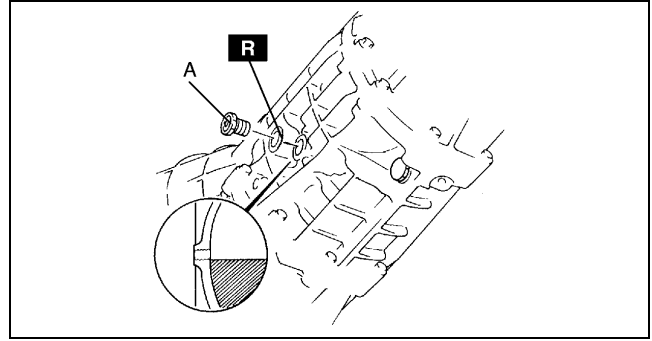
Grade: API service GL-4 or GL-5

Viscosity: SAE 75W-90 (All season) or SAE 80W-90 (Above 10°C {50°F})

4. Install the filler plug A with new washer.

Tightening torque

A: 27—48 N·m {2.7—4.9 kgf·m, 20—35 ft·lbf}



X5U511WB0

TRANSMISSION OIL REPLACEMENT [Y16M-D]

A5U051127001W04

1. Put the vehicle on level ground.
2. Remove the filler plug A and the drain plug B.
3. Drain the oil into a container.
4. Wipe the drain plug B clean.
5. Install the drain plug B with new washer.

Tightening torque

B: 27—48 N·m {2.7—4.9 kgf·m, 20—35 ft·lbf}

6. Add the specified oil from the filler plug hole.

Specified oil

Grade: API service GL-4 or GL-5

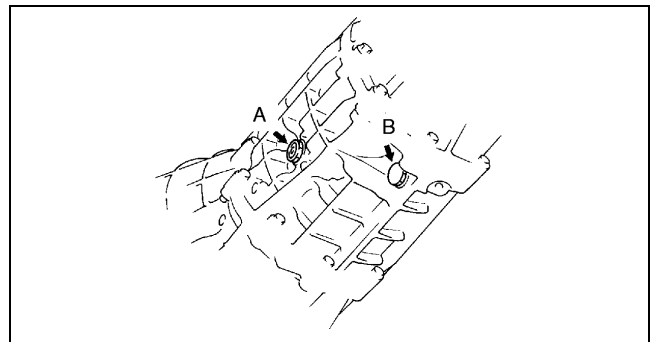
Viscosity: SAE 75W-90 (All season) or SAE 80W-90 (Above 10°C {50°F})

Capacity (approximate quantity): 1.70—1.80 L {1.79—1.90 US qt, 1.49—1.58 Imp qt}

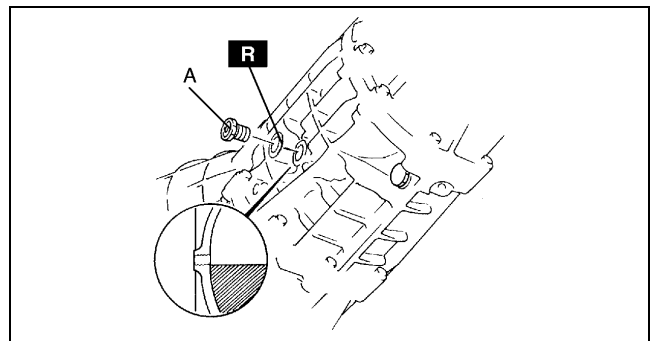
7. Verify that the oil is at the brim of the filler plug hole.
8. Install the filler plug A with new washer.

Tightening torque

A: 27—48 N·m {2.7—4.9 kgf·m, 20—35 ft·lbf}



X5U511WB1



X5U511WB0

MANUAL TRANSMISSION [Y16M-D]

OIL SEAL (REAR) REPLACEMENT [Y16M-D]

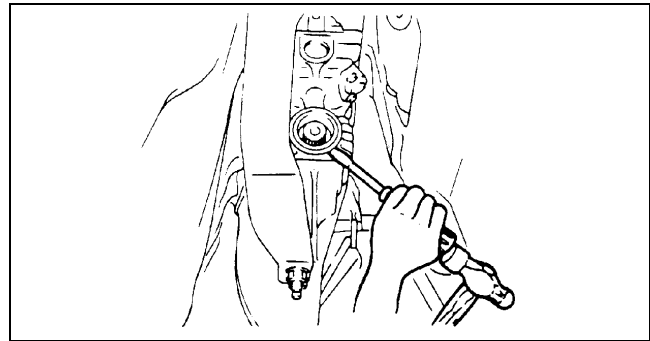
A5U051127230W02

1. Raise the vehicle and support it with safety stands.
2. Remove the propeller shaft. (See 03–15–2 PROPELLER SHAFT REMOVAL/INSTALLATION.)

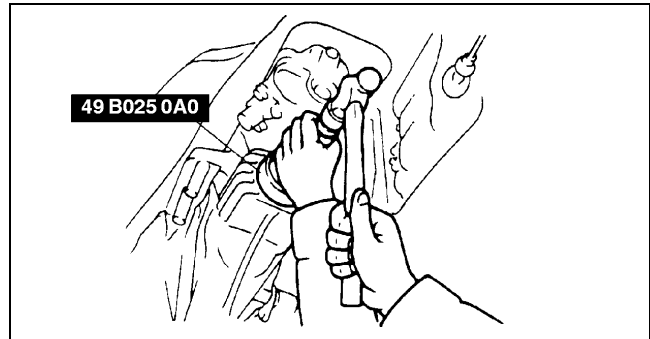
Caution

- Do not damage the extension housing and main shaft spline when removing the oil seal.

3. Remove the oil seal from the extension housing using a screwdriver.
4. Apply the transmission oil to a new oil seal.
5. Install the new oil seal using the **SST**.
6. Install the propeller shaft. (See 03–15–2 PROPELLER SHAFT REMOVAL/INSTALLATION.)
7. Inspect the oil level. (See 05–11B–2 TRANSMISSION OIL INSPECTION [Y16M-D].)



X5U511WB3



X5U511WB4

05–11B

VEHICLE SPEEDOMETER SENSOR REMOVAL/INSTALLATION [Y16M-D]

A5U051117400W03

(See 05–11A–4 VEHICLE SPEEDOMETER SENSOR REMOVAL/INSTALLATION [M15M-D].)

VEHICLE SPEEDOMETER SENSOR INSPECTION [Y16M-D]

A5U051117400W04

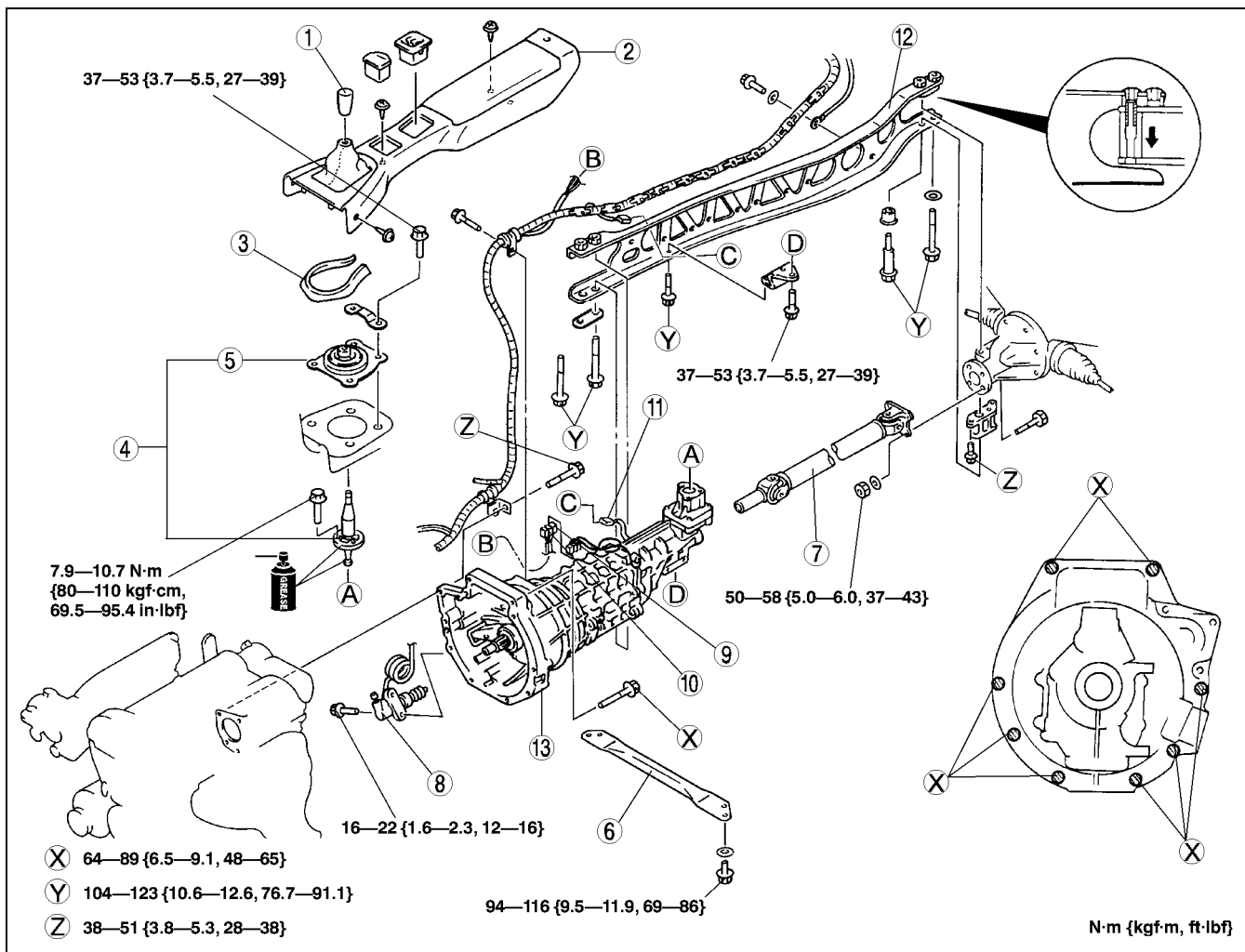
(See 05–11A–4 VEHICLE SPEEDOMETER SENSOR INSPECTION [M15M-D].)

MANUAL TRANSMISSION REMOVAL/INSTALLATION [Y16M-D]

A5U051101025W04

1. Drain the transmission oil. (See 05–11B–2 TRANSMISSION OIL REPLACEMENT [Y16M-D].)
2. Remove the cross member. (16-inch wheel vehicles)
3. Remove the cross member bracket. (16-inch wheel vehicles)
4. Remove the rear crossbar. (16-inch wheel vehicles) (See 02–14–8 REAR CROSSMEMBER REMOVAL/INSTALLATION.)
5. Remove the undercover.
6. Remove the starter. (See 01–19–2 STARTER REMOVAL/INSTALLATION.)
7. Remove the front pipe and middle pipe. (See 01–15–1 EXHAUST SYSTEM REMOVAL/INSTALLATION.)
8. Remove in the order indicated in the table.
9. Install in the reverse order of removal.
10. Add the specified amount and type of transmission oil. (See 05–11B–2 TRANSMISSION OIL REPLACEMENT [Y16M-D].)
11. Warm up the engine and transmission, inspect for oil leakage, and verify the transmission operation.

MANUAL TRANSMISSION [Y16M-D]



X5U511WB5

1	Shift lever knob
2	Rear console
3	Insulator
4	Shift lever component (See 05-11A-9 Shift Lever Component Installation Note)
5	Dust boot
6	Front crossbar
7	Propeller shaft (See 03-15-2 PROPELLER SHAFT REMOVAL/INSTALLATION)

8	Clutch release cylinder
9	Back-up light switch connector
10	Neutral switch connector
11	Speedometer sensor connector
12	Power plant frame (PPF) (See 05-11A-6 Power Plant Frame (PPF) Removal Note) (See 05-11A-7 Power Plant Frame (PPF) Installation Note)
13	Transmission (See 05-11A-7 Transmission Removal Note) (See 05-11A-7 Transmission Installation Note)