

# 09-10 BODY PANELS

## FUEL-FILLER LID

REMOVAL/INSTALLATION ..... 09-10-1

FUEL-FILLER LID ADJUSTMENT ..... 09-10-1

HOOD REMOVAL/INSTALLATION .... 09-10-2

HOOD ADJUSTMENT..... 09-10-2

Gap Adjustment..... 09-10-2

Height Adjustment ..... 09-10-3

## TRUNK LID

REMOVAL/INSTALLATION ..... 09-10-3

Balance Spring Removal Note..... 09-10-4

TRUNK LID ADJUSTMENT ..... 09-10-4

Clearance ..... 09-10-4

Tension ..... 09-10-4

## FRONT BUMPER

REMOVAL/INSTALLATION..... 09-10-5

## REAR BUMPER

REMOVAL/INSTALLATION..... 09-10-5

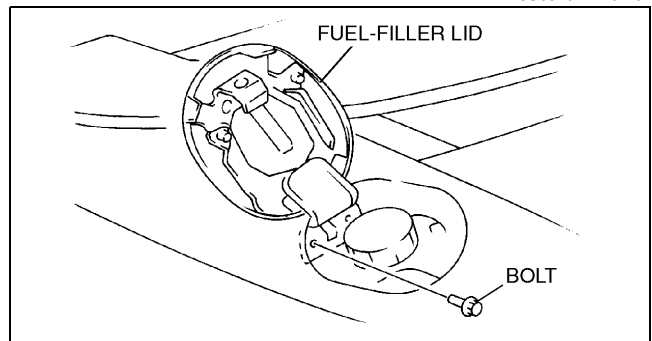
## FRONT FENDER PANEL

REMOVAL/INSTALLATION..... 09-10-6

## FUEL-FILLER LID REMOVAL/INSTALLATION

1. Remove the bolts, then remove the fuel-filler lid.
2. Install in the reverse order of removal.
3. Adjust the fuel-filler lid. (See 09-10-1 FUEL-FILLER LID ADJUSTMENT.)

A5U091042410W01



Y5U910WA0

## FUEL-FILLER LID ADJUSTMENT

1. Measure the gap and height between the fuel-filler lid and the body panel.
  - If not as specified, loosen the fuel-filler lid installation bolts and reposition the fuel-filler lid.

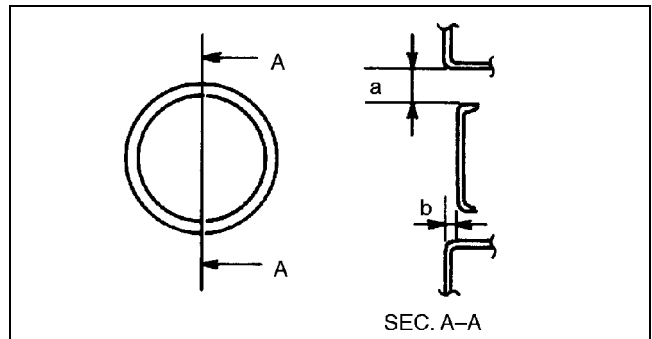
### Clearance

a: 2.5—4.5 mm {0.10—0.17 in}

b: -1.0—1.0 mm {-0.03—0.03 in}

2. Tighten the bolts.

A5U091042410W02



X5U910WAB

# BODY PANELS

## HOOD REMOVAL/INSTALLATION

A5U091052310W01

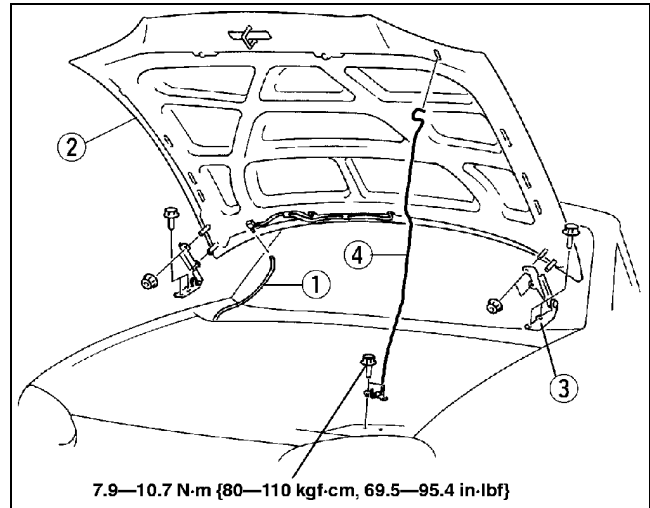
### Warning

- The hood may fall and injure you. Always perform these procedures together with at least another person.

1. To remove the hood hinge, remove the front fender panel. (See 09-10-6 FRONT FENDER PANEL REMOVAL/INSTALLATION.)
2. Remove in the order indicated in the table.

1	Windshield washer hose
2	Hood
3	Hood hinge
4	Hood stay

3. Install in the reverse order of removal.
4. Adjust the hood. (See 09-10-2 HOOD ADJUSTMENT.)



A5U910W001

## HOOD ADJUSTMENT

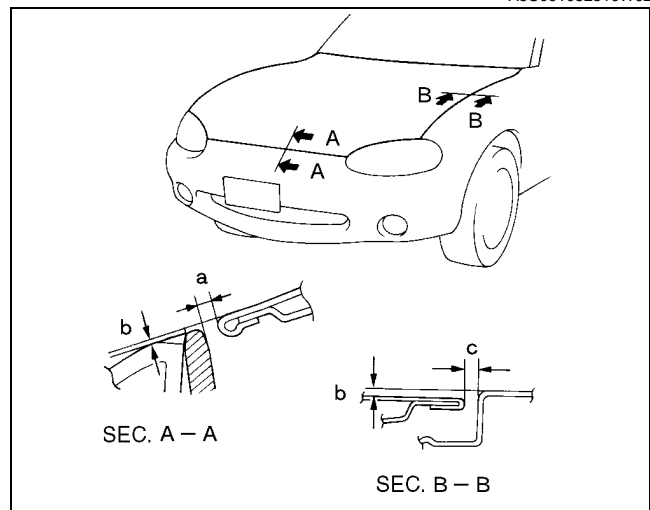
A5U091052310W02

1. Measure the gap and height between the hood and the body.
  - If not as specified, adjust the gap and height.

### Clearance

- a: 4.1—7.1 mm {0.16—0.28 in}
- b: -1.8—1.2 mm {-0.07—0.47 in}
- c: 3.3—5.7 mm {0.13—0.23 in}

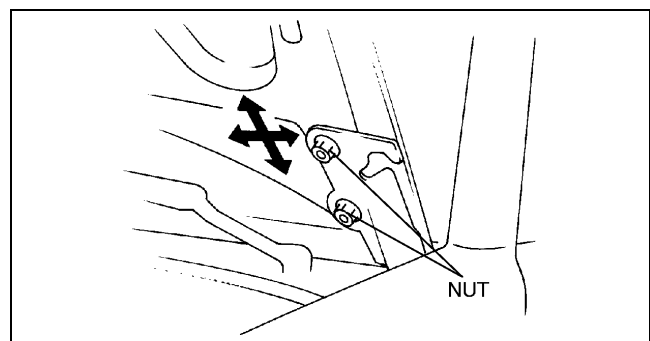
2. Adjust the hood lock after the hood has been aligned.



Z5U0910WA2

## Gap Adjustment

1. Loosen the hood installation nuts and reposition the hood.
2. Tighten the nuts.

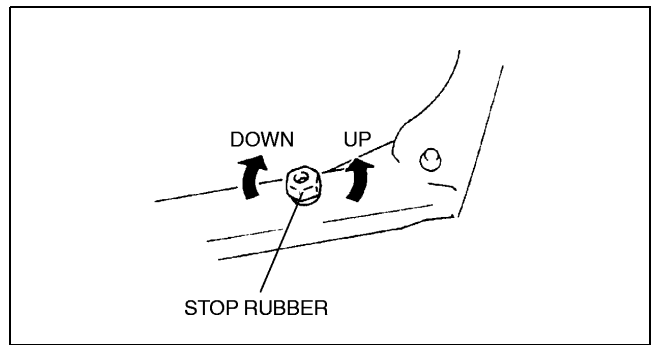


X5U910WA2

## BODY PANELS

### Height Adjustment

1. Turn the stop rubber to adjust the height of the hood.



X5U910WA3

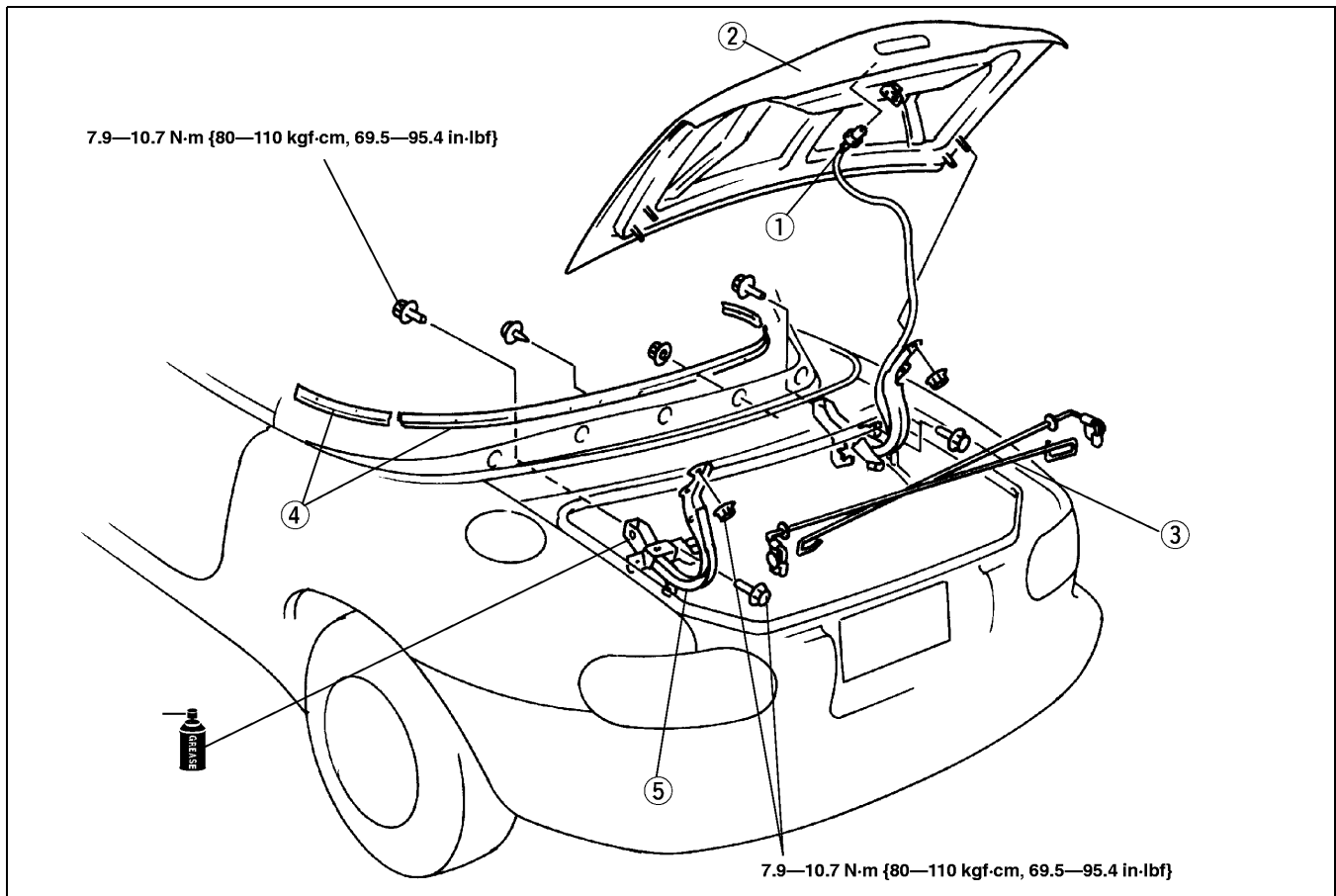
### TRUNK LID REMOVAL/INSTALLATION

A5U091052610W01

#### Warning

- Removing the balance spring without supporting the trunk lid can be dangerous. The trunk lid may fall and injure you. Open the trunk lid fully and support it before removing the balance spring. Perform these procedures together with another person.

1. Disconnect the negative battery cable.
2. Remove the rear package trim. (See 09-17-7 REAR PACKAGE TRIM REMOVAL/INSTALLATION.)
3. Remove in the order indicated in the table.
4. Install in the reverse order of removal.
5. Adjust the trunk lid. (See 09-10-4 TRUNK LID ADJUSTMENT.)



X5U910WA5

1	Bulb
2	Trunk lid
3	Balance spring (See 09-10-4 Balance Spring Removal Note)

4	Set plate
5	Trunk lid hinge

09-10

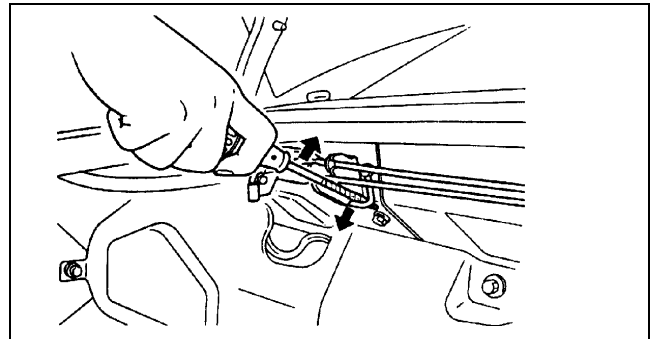
# BODY PANELS

## Balance Spring Removal Note

### Note

- The balance springs are under high tension.

- Carefully lift the balance spring using a tape-wrapped screwdriver.
- Remove the balance spring.



Y5U910WA2

## TRUNK LID ADJUSTMENT

### Clearance

- Measure the gap between the trunk lid and the body panel.
  - If not as specified, loosen the trunk lid installation nuts and reposition the trunk lid.

### Clearance

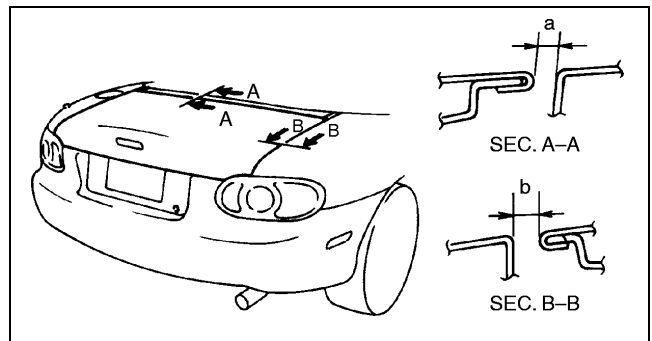
- a: 3.5—6.5 mm {0.14—0.25 in}  
b: 3.8—6.2 mm {0.15—0.24 in}

- Tighten the trunk lid installation nuts.

### Tightening torque

- 7.9—10.7 N·m {80—110 kgf·cm,  
69.5—95.4 in·lbf}

- Adjust the trunk lid striker after the trunk lid has been aligned.



X5U910WA7

### Tension

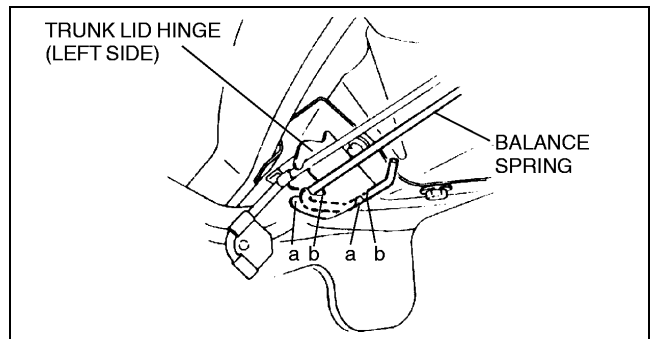
- Slide the balance spring to the desired position as described below using a tape-wrapped screwdriver.

### Note

- The trunk lid should rise **50—300 mm {2.0—11.8 in}** when the trunk lid is unlocked.

×: Position

Tension	Hook bracket	Set position	
		a	b
Standard	Right side	×	
	Left side		×
Increase	Right side	×	
	Left side	×	
Decrease	Right side		×
	Left side		×



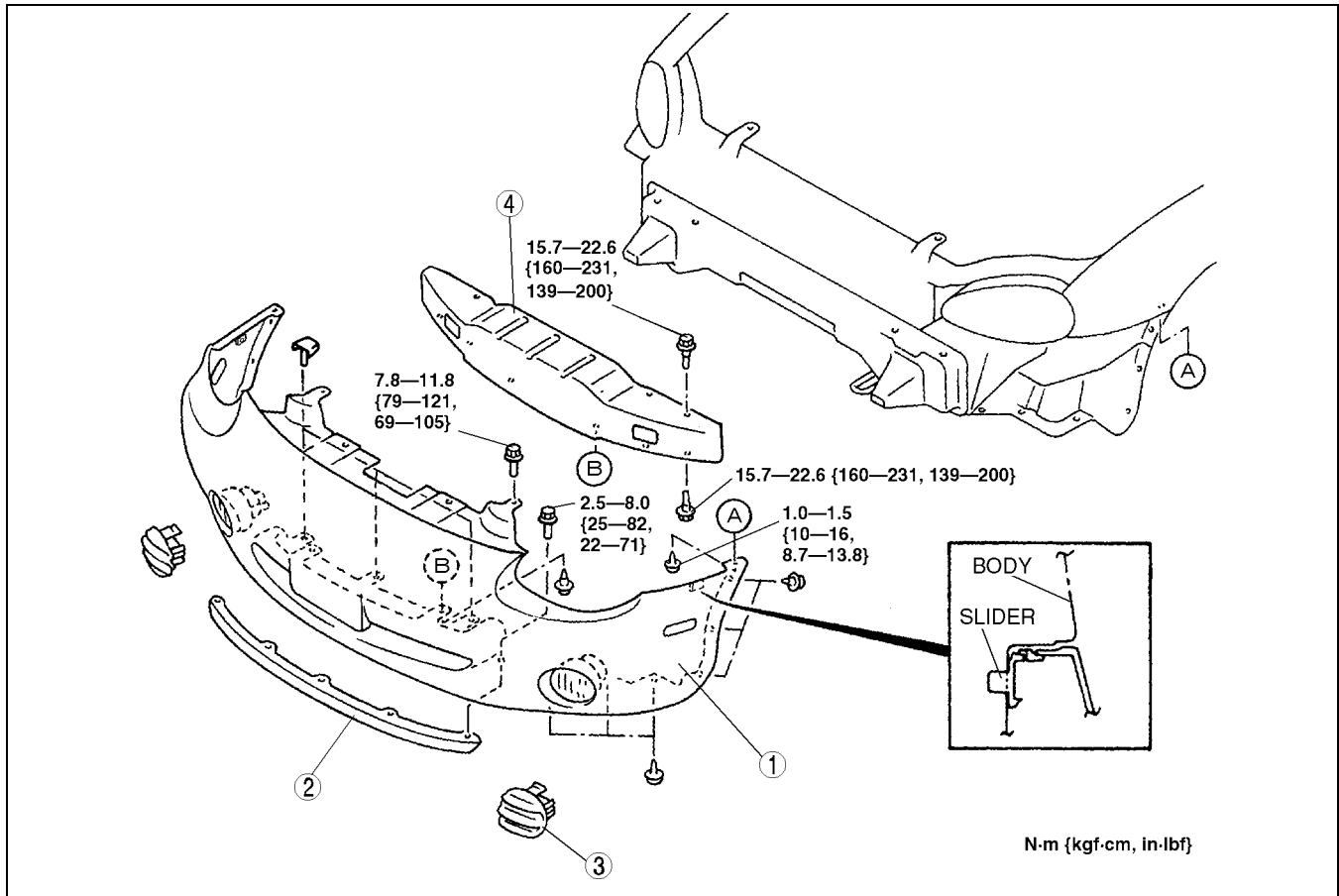
X5U910WA8

## BODY PANELS

### FRONT BUMPER REMOVAL/INSTALLATION

A5U091050031W01

1. Disconnect the negative battery cable.
2. Disconnect the front fog light connector. (With front fog light)
3. Remove in the order indicated in the table.
4. Install in the reverse order of removal.



Z5U0910WA0

1	Front bumper
2	Air dam skirt

3	Cover (Without front fog light)
4	Bumper reinforcement

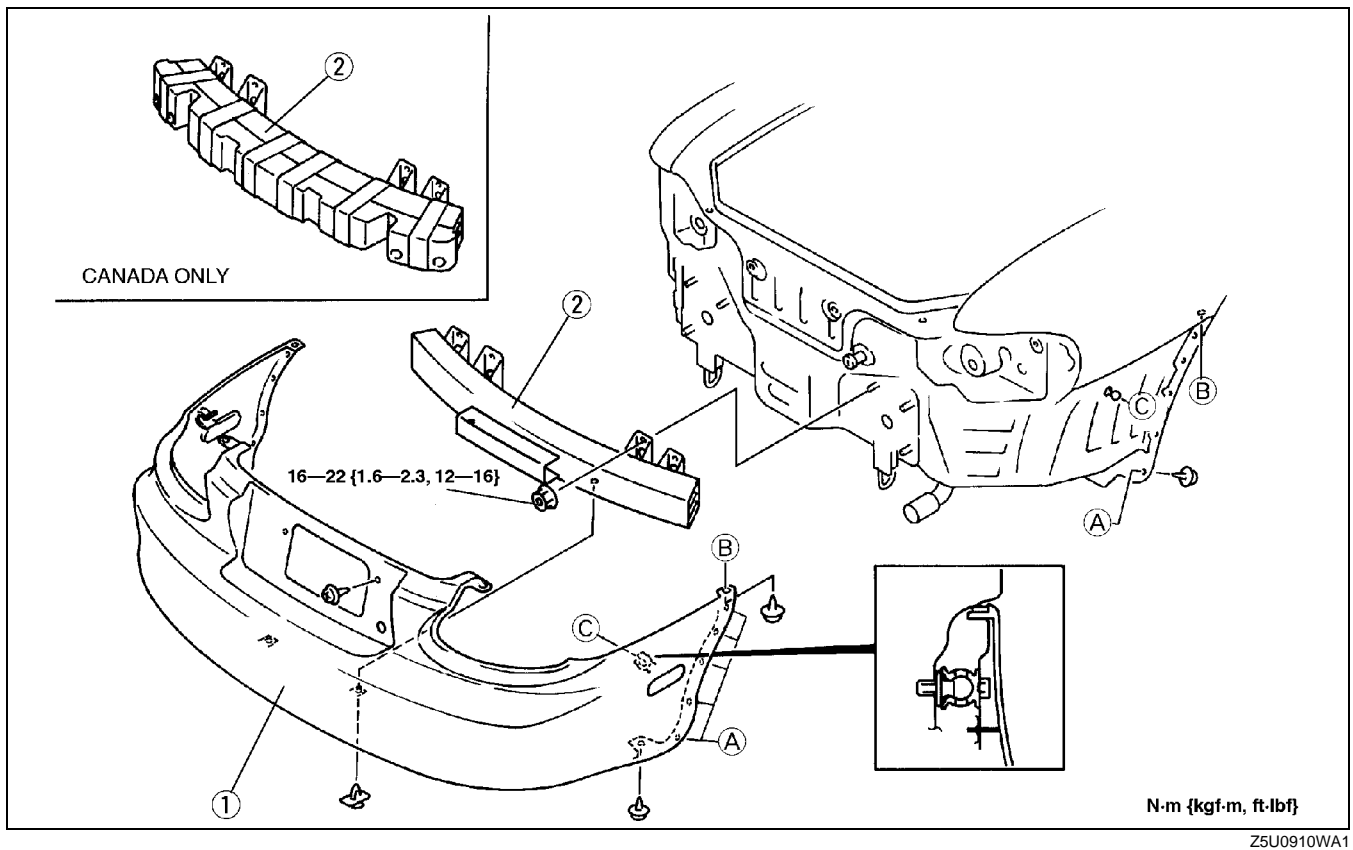
09-10

### REAR BUMPER REMOVAL/INSTALLATION

A5U091050221W01

1. Disconnect the negative battery cable.
2. Remove the license plate.
3. Remove the rear combination light. (See 09-18-4 REAR COMBINATION LIGHT REMOVAL/INSTALLATION.)
4. Remove in the order indicated in the table.
5. Install in the reverse order of removal.

## BODY PANELS



1	Rear bumper
---	-------------

2	Bumper reinforcement
---	----------------------

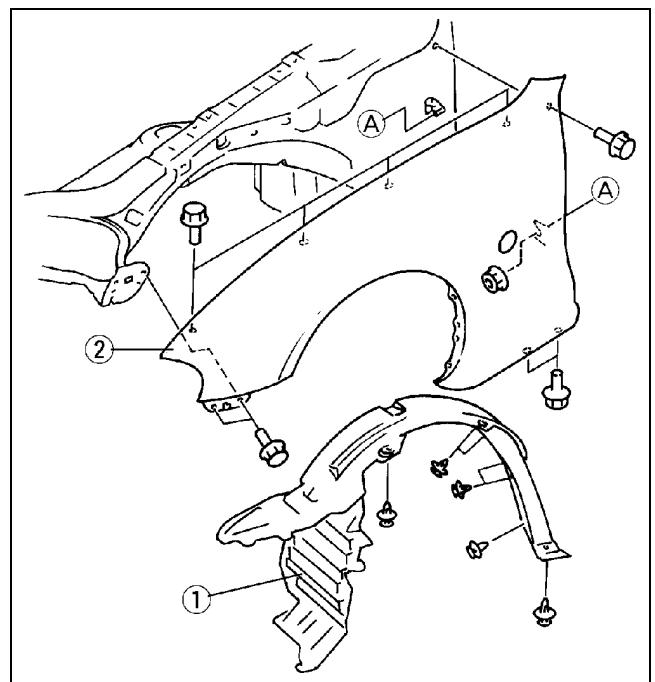
### FRONT FENDER PANEL REMOVAL/INSTALLATION

A5U091052110W01

1. Disconnect the negative battery cable.
2. Remove the front bumper. (See 09-10-5 FRONT BUMPER REMOVAL/INSTALLATION.)
3. Remove the front side maker light.
4. Remove in the order indicated in the table.

1	Mud guard
2	Front fender panel

5. Install in the reverse order of removal.



X5U910WA4