

## 09-17 INTERIOR TRIM

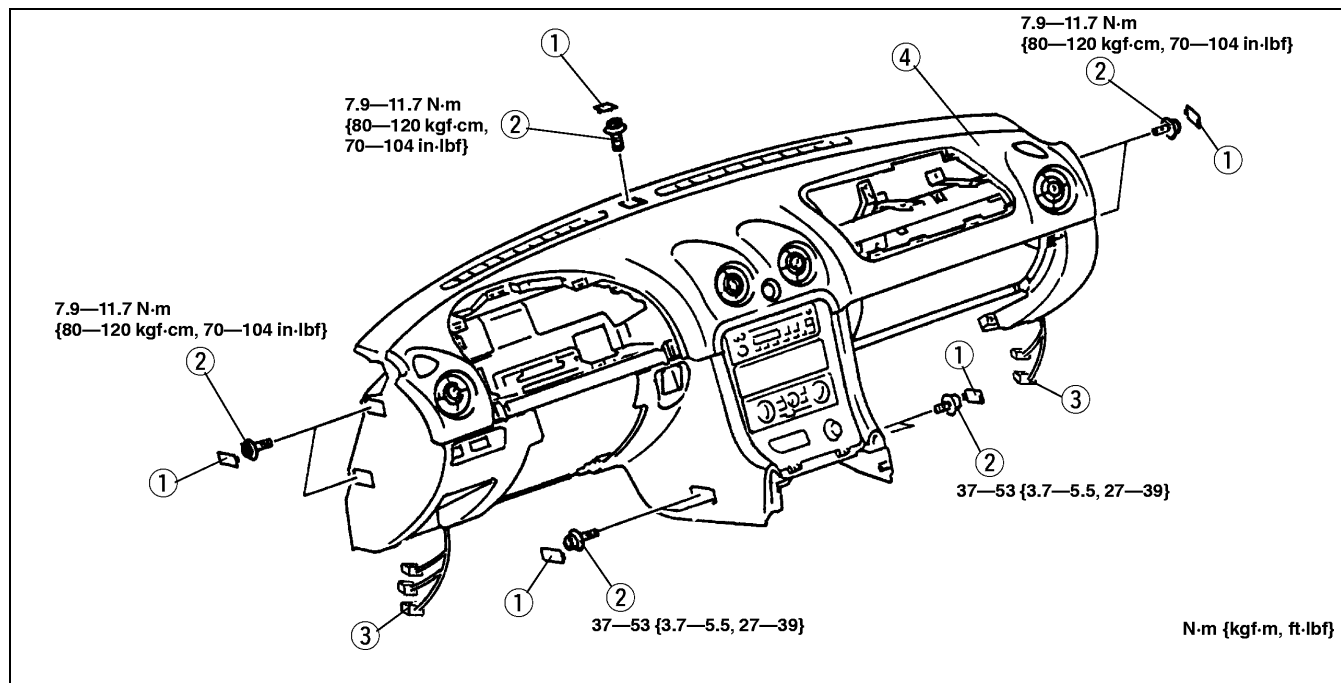
DASHBOARD		FRONT HEADER TRIM	
REMOVAL/INSTALLATION . . . . .	09-17-2	REMOVAL/INSTALLATION . . . . .	09-17-7
DASHBOARD		QUARTER TRIM	
DISASSEMBLY/ASSEMBLY . . . . .	09-17-3	REMOVAL/INSTALLATION . . . . .	09-17-7
CENTER PANEL		REAR PACKAGE TRIM	
REMOVAL/INSTALLATION . . . . .	09-17-4	REMOVAL/INSTALLATION . . . . .	09-17-7
COLUMN COVER		SCUFF PLATE	
REMOVAL/INSTALLATION . . . . .	09-17-4	REMOVAL/INSTALLATION . . . . .	09-17-8
CONSOLE REMOVAL/INSTALLATION .	09-17-4	FRONT SIDE TRIM	
CONSOLE DISASSEMBLY/ASSEMBLY	09-17-5	REMOVAL/INSTALLATION . . . . .	09-17-8
GLOVE COMPARTMENT		TRUNK END TRIM	
REMOVAL/INSTALLATION . . . . .	09-17-5	REMOVAL/INSTALLATION . . . . .	09-17-8
LOWER PANEL		Internal Trunk Lid Release Handle Cover	
REMOVAL/INSTALLATION . . . . .	09-17-5	Installation Note . . . . .	09-17-9
METER HOOD		TRUNK SIDE TRIM	
REMOVAL/INSTALLATION . . . . .	09-17-6	REMOVAL/INSTALLATION . . . . .	09-17-9
DOOR TRIM		FLOOR COVERING	
REMOVAL/INSTALLATION . . . . .	09-17-6	REMOVAL/INSTALLATION . . . . .	09-17-10
A-PILLAR TRIM		REAR END MAT	
REMOVAL/INSTALLATION . . . . .	09-17-6	REMOVAL/INSTALLATION . . . . .	09-17-10

## INTERIOR TRIM

### DASHBOARD REMOVAL/INSTALLATION

A5U091755100W01

1. Disconnect the negative battery cable.
2. Remove the driver-side air bag module. (See 08-10-5 DRIVER-SIDE AIR BAG MODULE REMOVAL/INSTALLATION.)
3. Remove the passenger-side air bag module. (See 08-10-6 PASSENGER-SIDE AIR BAG MODULE REMOVAL/INSTALLATION.)
4. Remove the A-pillar trim. (See 09-17-6 A-PILLAR TRIM REMOVAL/INSTALLATION.)
5. Remove the console. (See 09-17-4 CONSOLE REMOVAL/INSTALLATION.)
6. Remove the lower panel.
7. Remove the instrument cluster. (See 09-22-3 INSTRUMENT CLUSTER REMOVAL/INSTALLATION.)
8. Remove the glove compartment. (See 09-17-5 GLOVE COMPARTMENT REMOVAL/INSTALLATION.)
9. Remove the hood release lever.
10. Remove the control wire of the heater unit and blower unit. (See 07-40-8 CLIMATE CONTROL UNIT REMOVAL.) (See 07-40-9 CLIMATE CONTROL UNIT INSTALLATION.)
11. Remove the installation bolts and nuts fixing the steering shaft to the dashboard, and pull down the steering shaft.
12. Remove in the order indicated in the table.
13. Install in the reverse order of removal.



X5U917WA0

1	Cover
2	Bolt

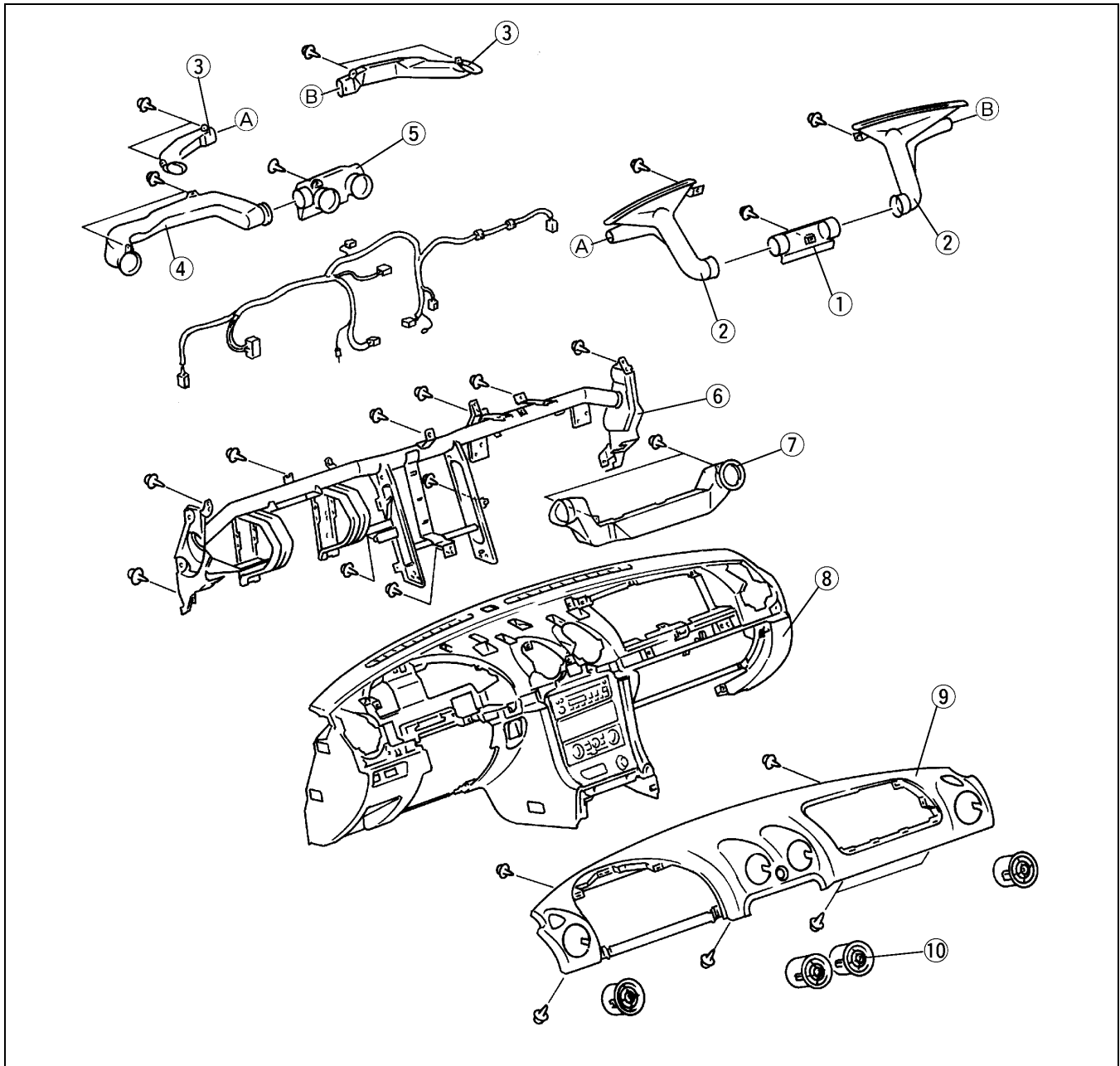
3	Connector
4	Dashboard

# INTERIOR TRIM

## DASHBOARD DISASSEMBLY/ASSEMBLY

A5U091755100W02

1. Disassemble in the order indicated in the table.
2. Assemble in the reverse order of disassembly.



09-17

X5U917WA1

1	Defroster duct
2	Defroster nozzle
3	Side demister nozzle
4	Duct
5	Center duct

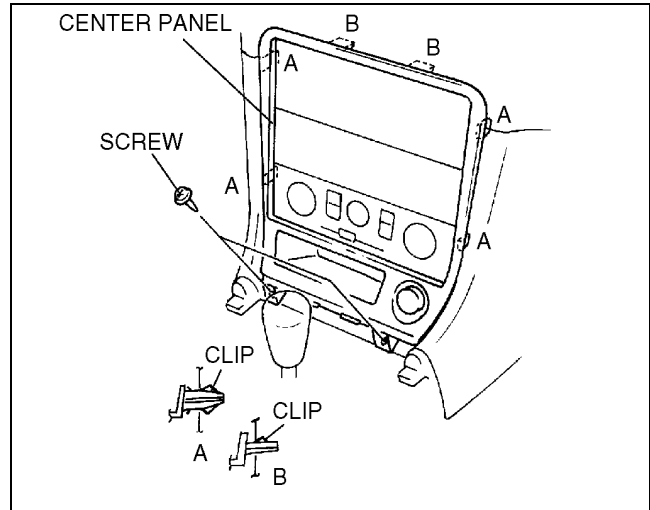
6	Dashboard member
7	Duct
8	Dashboard
9	Pad
10	Ventilator grille

## INTERIOR TRIM

### CENTER PANEL REMOVAL/INSTALLATION

A5U091755210W01

1. Disconnect the negative battery cable.
2. Remove the console.
3. Remove the screws.
4. Pull the center panel, then disengage clips A and B from the body.
5. Disconnect the cigarette lighter connector.
6. Install in the reverse order of removal.

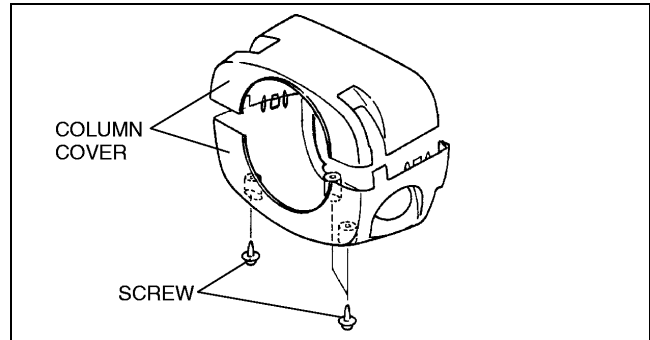


X5U917WA8

### COLUMN COVER REMOVAL/INSTALLATION

A5U091760200W01

1. Remove the screws, then remove the column cover.
2. Install in the reverse order of removal.



X5U917WA6

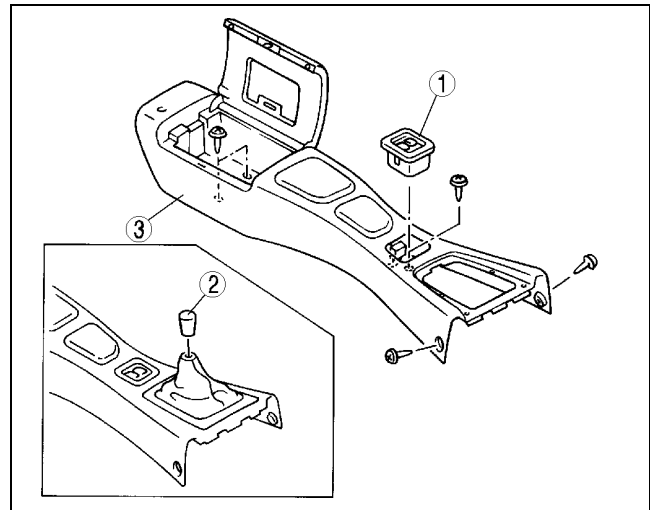
### CONSOLE REMOVAL/INSTALLATION

A5U091764310W01

1. Disconnect the negative battery cable.
2. Remove in the order indicated in the table.

1	Power window switch
2	Shift lever knob (MT)
3	Console

3. Install in the reverse order of removal.



Z5U917WA0

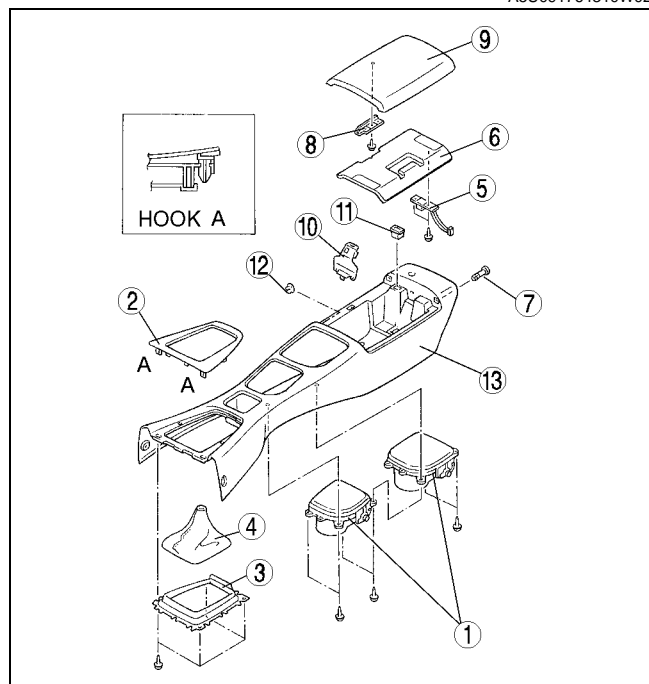
## INTERIOR TRIM

### CONSOLE DISASSEMBLY/ASSEMBLY

1. Disassemble in the order indicated in the table.

1	Cup holder
2	Console panel
3	Set plate (MT)
4	Boot (MT)
5	Console lid stopper
6	Console lid inner
7	Pin
8	Console lid lock
9	Console lid outer
10	Cover
11	Hole cover No.1
12	Hole cover No.2
13	Console

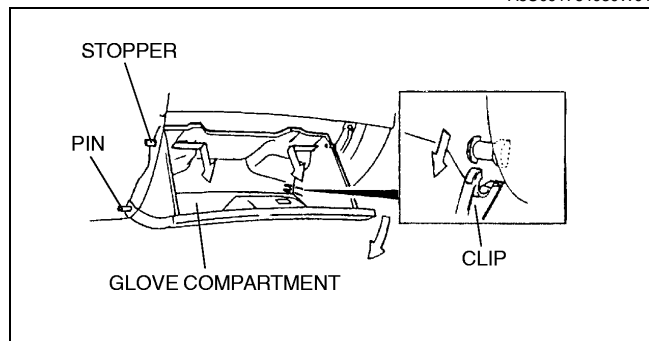
2. Assemble in the reverse order of disassembly.



Z5U917WA1

### GLOVE COMPARTMENT REMOVAL/INSTALLATION

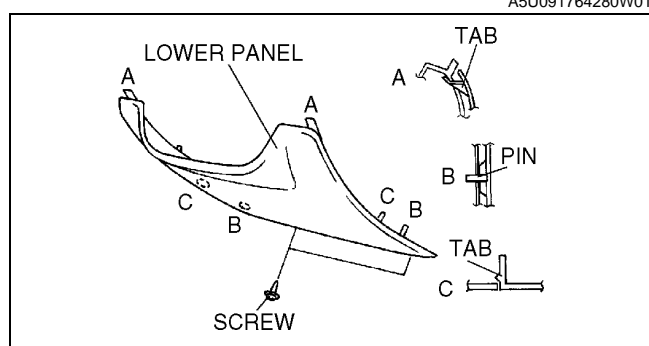
1. Bend the stoppers inward, then remove.
2. Turn the glove compartment downward and pull the clip.
3. Slide the glove compartment to the right, then disengage the pin.
4. Install in the reverse order of removal.



X5U917WA2

### LOWER PANEL REMOVAL/INSTALLATION

1. Remove the screws.
2. Pull the lower panel toward you, then disengage tabs C and pins B from the body.
3. Pull the lower panel downward, then disengage tabs A from the body.
4. Install in the reverse order of removal.



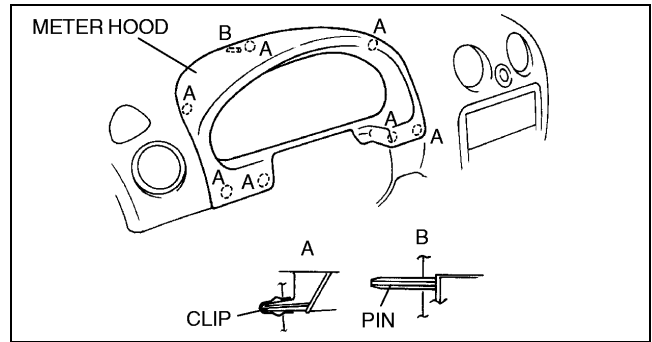
Z5U0917W001

## INTERIOR TRIM

### METER HOOD REMOVAL/INSTALLATION

A5U091755420W01

1. Pull the meter hood toward you, then disengage clips A and pin B from the body.
2. Install in the reverse order of removal.

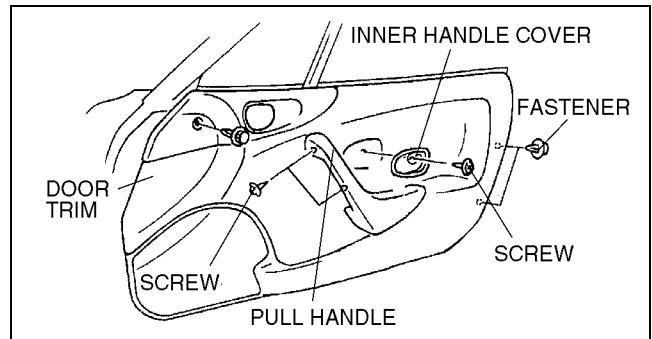


X5U917WA7

### DOOR TRIM REMOVAL/INSTALLATION

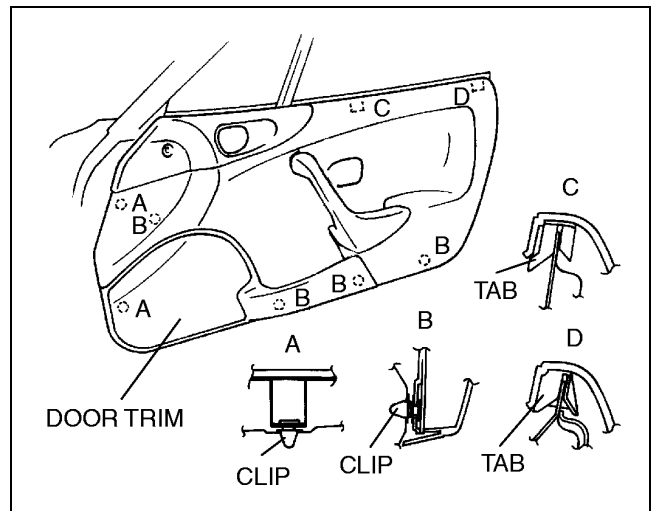
A5U091768420W01

1. Remove the screw.
2. Remove the inner handle cover.
3. Remove the fasteners.



Z5U917WA2

4. Pull the door trim, then disengage clips A and B from the body.
5. Lift the door trim, then disengage tabs C and D from the body.
6. Install in the reverse order of removal.

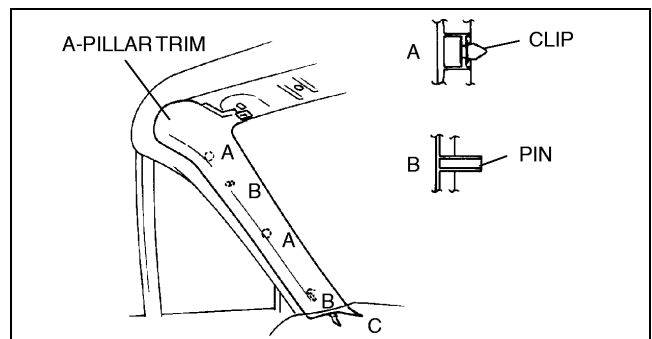


Y5U917WA3

### A-PILLAR TRIM REMOVAL/INSTALLATION

A5U091768160W01

1. Remove the front header trim.
2. Pull the A-pillar trim toward you, then disengage clips A and pin B from the body.
3. Pull the A-pillar trim upward, then disengage tab C from the body.
4. Install in the reverse order of removal.



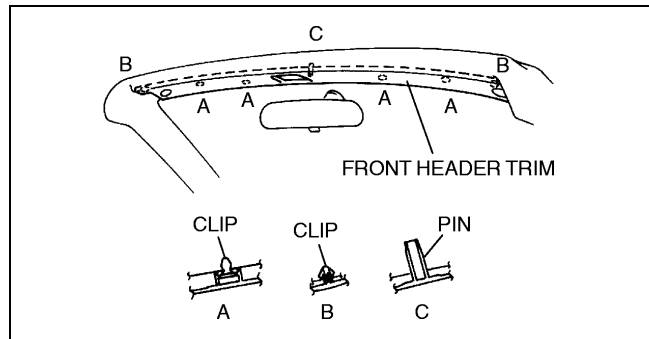
X5U917WB0

## INTERIOR TRIM

### FRONT HEADER TRIM REMOVAL/INSTALLATION

A5U091768090W01

1. Disconnect the negative battery cable.
2. Remove the striker.
3. Remove the sunvisor.
4. Remove the interior light. (See 09-18-17 INTERIOR LIGHT REMOVAL/INSTALLATION.)
5. Pull the front header trim toward you, then disengage the clips A, B and pin C from the body.
6. Install in the reverse order of removal.

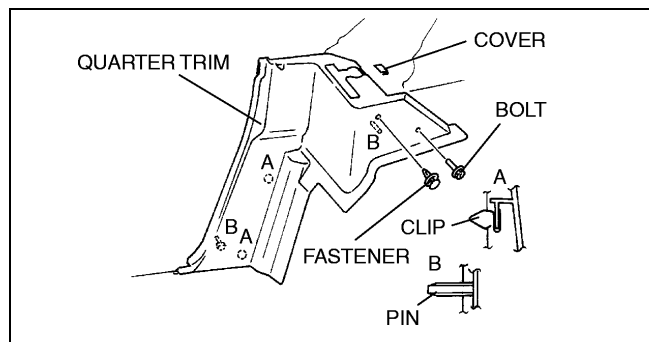


X5U917WA9

### QUARTER TRIM REMOVAL/INSTALLATION

A5U091768525W01

1. Remove the scuff plate.
2. Remove the beltline cover.
3. Remove the seaming welt.
4. Remove the bolt and fastener.
5. Remove the cover.
6. Pull the quarter trim toward you, then disengage clips A and pins B from the body.
7. Slide the quarter trim to the front side, then remove it.
8. Install in the reverse order of removal.

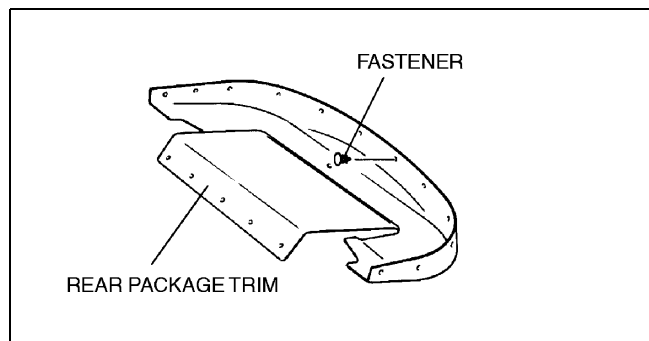


X5U917WB5

### REAR PACKAGE TRIM REMOVAL/INSTALLATION

A5U091768320W01

1. Remove the quarter trim. (See 09-17-7 QUARTER TRIM REMOVAL/INSTALLATION.)
2. Close the convertible top fully.
3. Remove the fasteners.
4. Remove the rear package trim.
5. Install in the reverse order of removal.

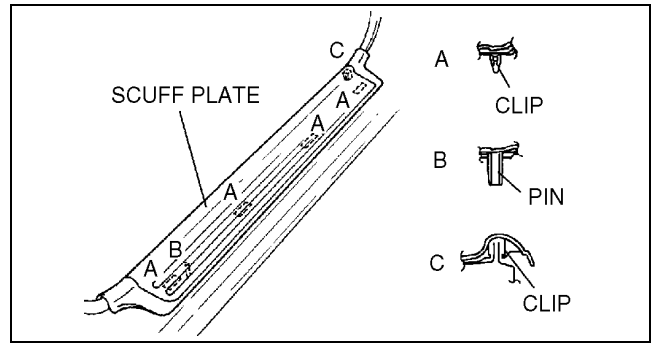


Y5U917WA1

## INTERIOR TRIM

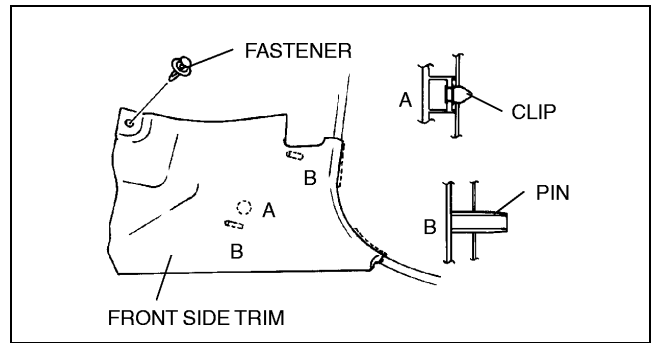
### SCUFF PLATE REMOVAL/INSTALLATION

1. Pull the scuff plate upward, then disengage clips A, C and pin B from the body.
2. Install in the reverse order of removal.



### FRONT SIDE TRIM REMOVAL/INSTALLATION

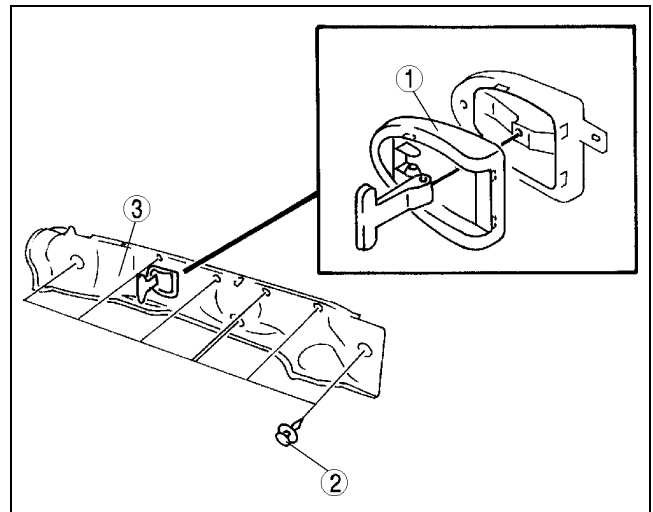
1. Remove the scuff plate.
2. Remove the fastener.
3. Pull the front side trim toward you, then disengage clip A and pins B from the body.
4. Install in the reverse order of removal.



### TRUNK END TRIM REMOVAL/INSTALLATION

1. Pull the internal trunk lid release handle to disengage it from the holder.
2. Remove in the order indicated in the table.
3. Install in the reverse order of removal.

1	Internal trunk lid release handle cover (See 09-17-9 Internal Trunk Lid Release Handle Cover Installation Note)
2	Fastener
3	Trunk end trim





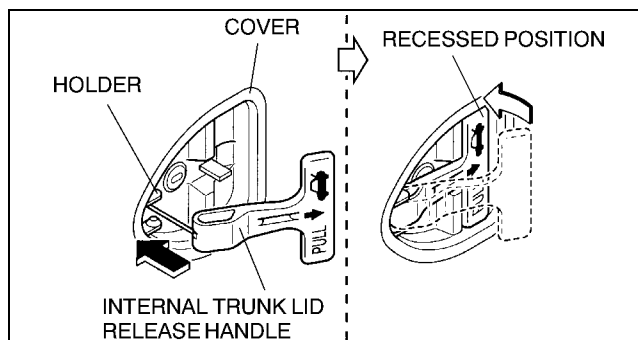
## INTERIOR TRIM

### Internal Trunk Lid Release Handle Cover Installation Note

#### Caution

- Always keep the internal trunk lid release handle firmly attached to the holder and in the recessed position. Not securing the handle this way could allow it to snag luggage in the compartment and open the trunk lid.

1. After installing the internal trunk lid release handle cover, attach the internal trunk lid release handle to the holder on the cover and in the recessed position.
4. Remove the trunk end trim.
5. Install in the reverse order of removal.

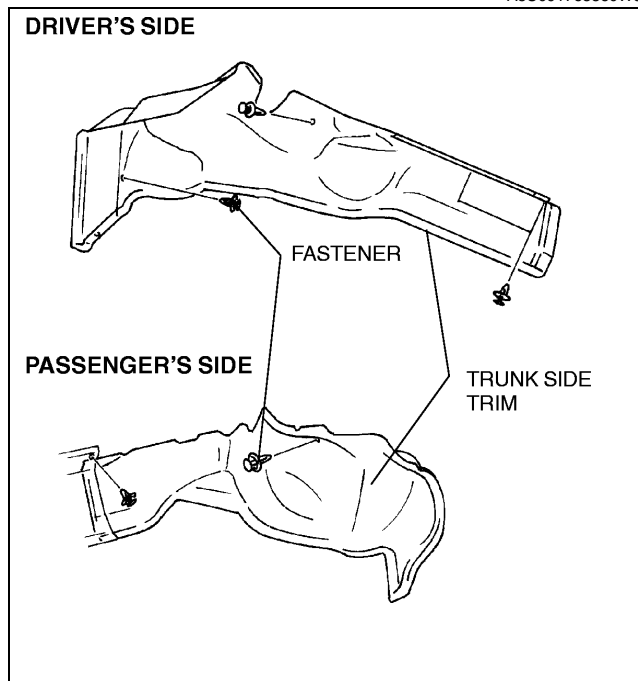


Y5U914WAA

### TRUNK SIDE TRIM REMOVAL/INSTALLATION

1. Remove the fasteners.
2. Remove the trunk side trim.
3. Install in the reverse order of removal.

A5U091768860W01



X5U917WB8

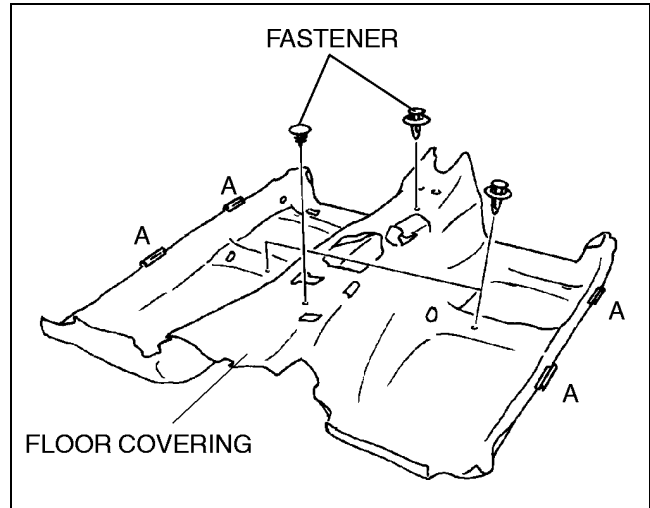
09-17

## INTERIOR TRIM

### FLOOR COVERING REMOVAL/INSTALLATION

A5U091768670W01

1. Disconnect the negative battery cable.
2. Remove the seats.
3. Remove the dashboard. (See 09-17-2 DASHBOARD REMOVAL/INSTALLATION.)
4. Remove the heater unit. (See 07-11-5 HEATER UNIT REMOVAL/INSTALLATION.)
5. Remove the front side trims. (See 09-17-8 FRONT SIDE TRIM REMOVAL/INSTALLATION.)
6. Remove the rear package trims. (See 09-17-7 REAR PACKAGE TRIM REMOVAL/INSTALLATION.)
7. Remove the rear end mat.
8. Remove the seat belts. (See 08-11-1 SEAT BELT REMOVAL/INSTALLATION.)
9. Remove the footrest.
10. Remove the fasteners.
11. Disengage the tabs A from the body.
12. Remove the floor covering.
13. Install in the reverse order of removal.

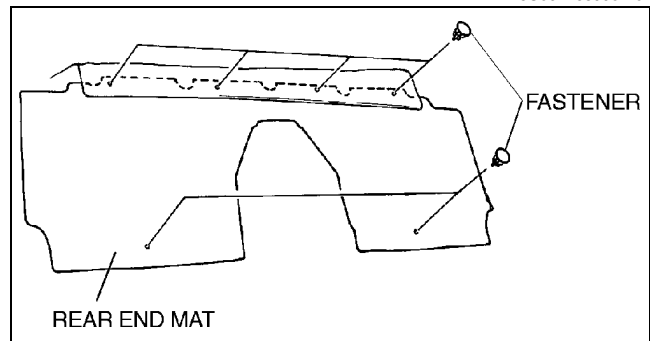


Z5U0917W003

### REAR END MAT REMOVAL/INSTALLATION

A5U091768990W01

1. Remove the fasteners.
2. Remove the rear end mat.
3. Install in the reverse order of removal.



A5U917W001