

09-13 SEATS

SEAT REMOVAL/INSTALLATION 09-13-1

SEAT DISASSEMBLY/ASSEMBLY 09-13-2

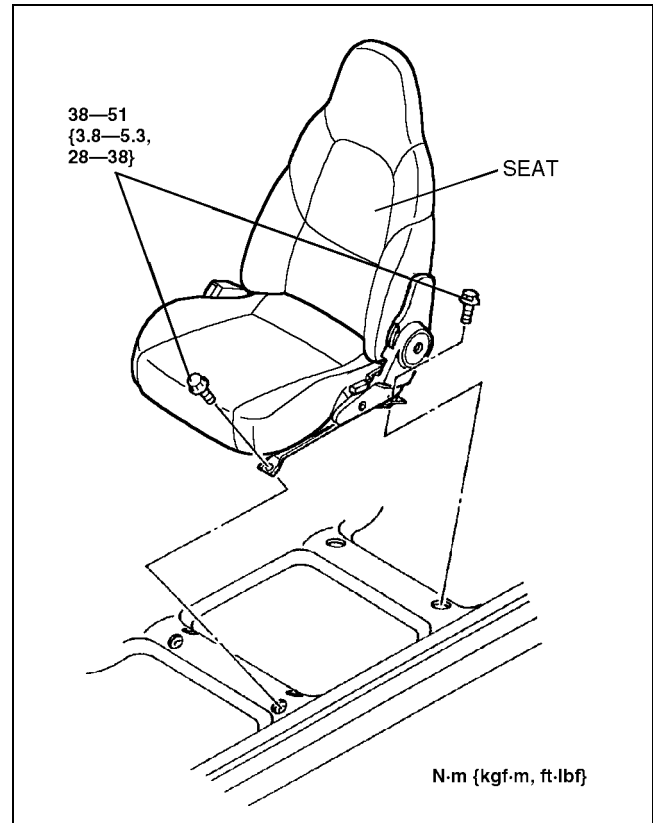
Reclining Knuckle Cover

Removal Note 09-13-2

SEAT REMOVAL/INSTALLATION

A5U091357100W01

1. Disconnect the negative battery cable.
2. Disconnect the buckle switch connector.
3. Remove in the bolts, then remove the seat.
4. Install in the reverse order of removal.



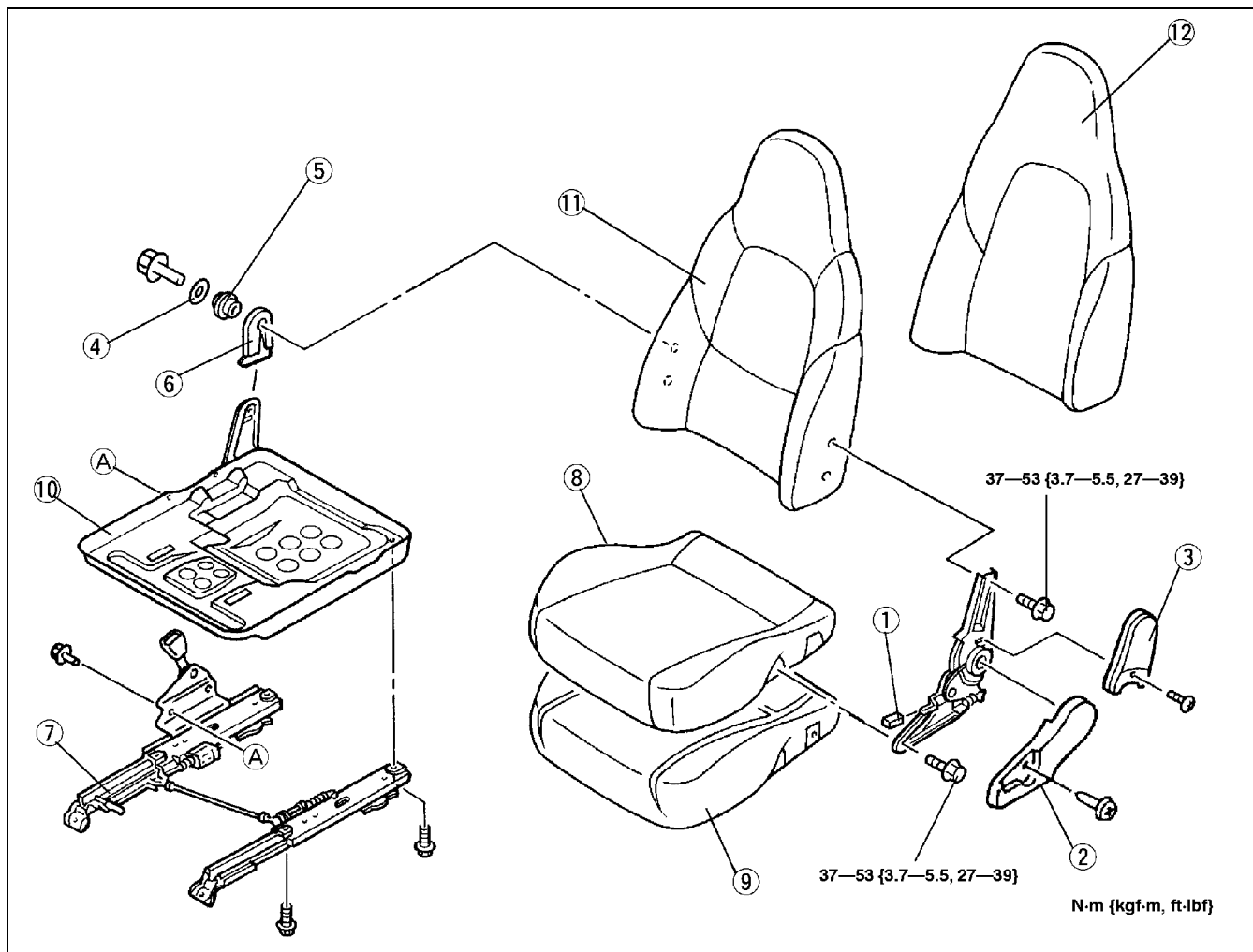
Z5U913WA0

SEATS

SEAT DISASSEMBLY/ASSEMBLY

A5U091357100W02

1. Disassemble in the order indicated in the table.
2. Assemble in the reverse order of disassembly.



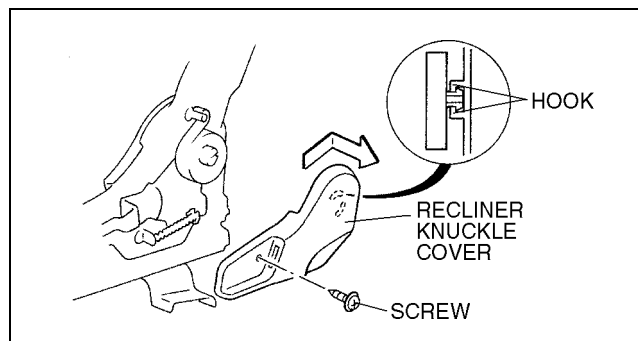
Z5U913WA1

1	Recliner lever
2	Recliner knuckle cover (See 09-13-2 Reclining Knuckle Cover Removal Note)
3	Recliner knuckle
4	Silencer
5	Bushing

6	Hinge cover
7	Slide adjuster
8	Seat cushion trim
9	Seat cushion pad
10	Seat cushion frame
11	Seat back trim
12	Seat back pad and frame

Reclining Knuckle Cover Removal Note

1. Remove the screws.
2. Lift the reclining knuckle cover in the arrow direction to remove the hook.



Z5U913WA2