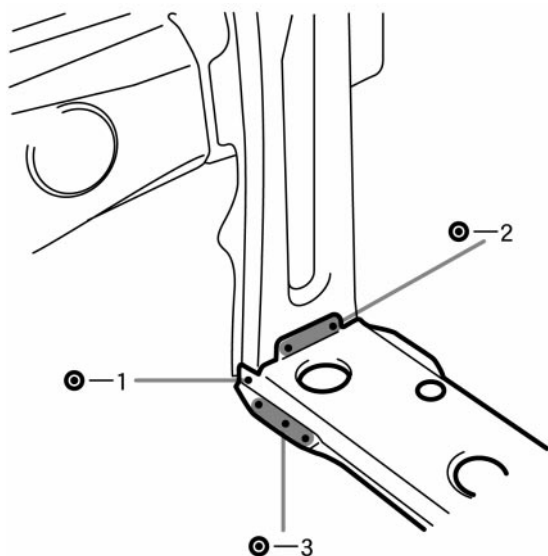
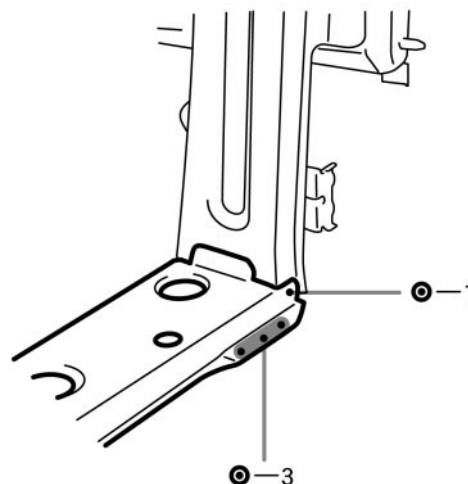
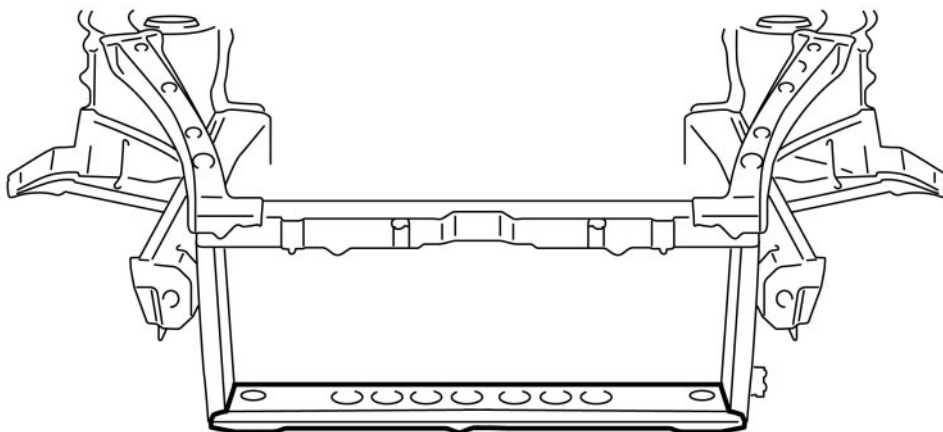


# FRONT CROSSMEMBER (ASSY)

## REPLACEMENT

### 1. REMOVE FRONT CROSSMEMBER

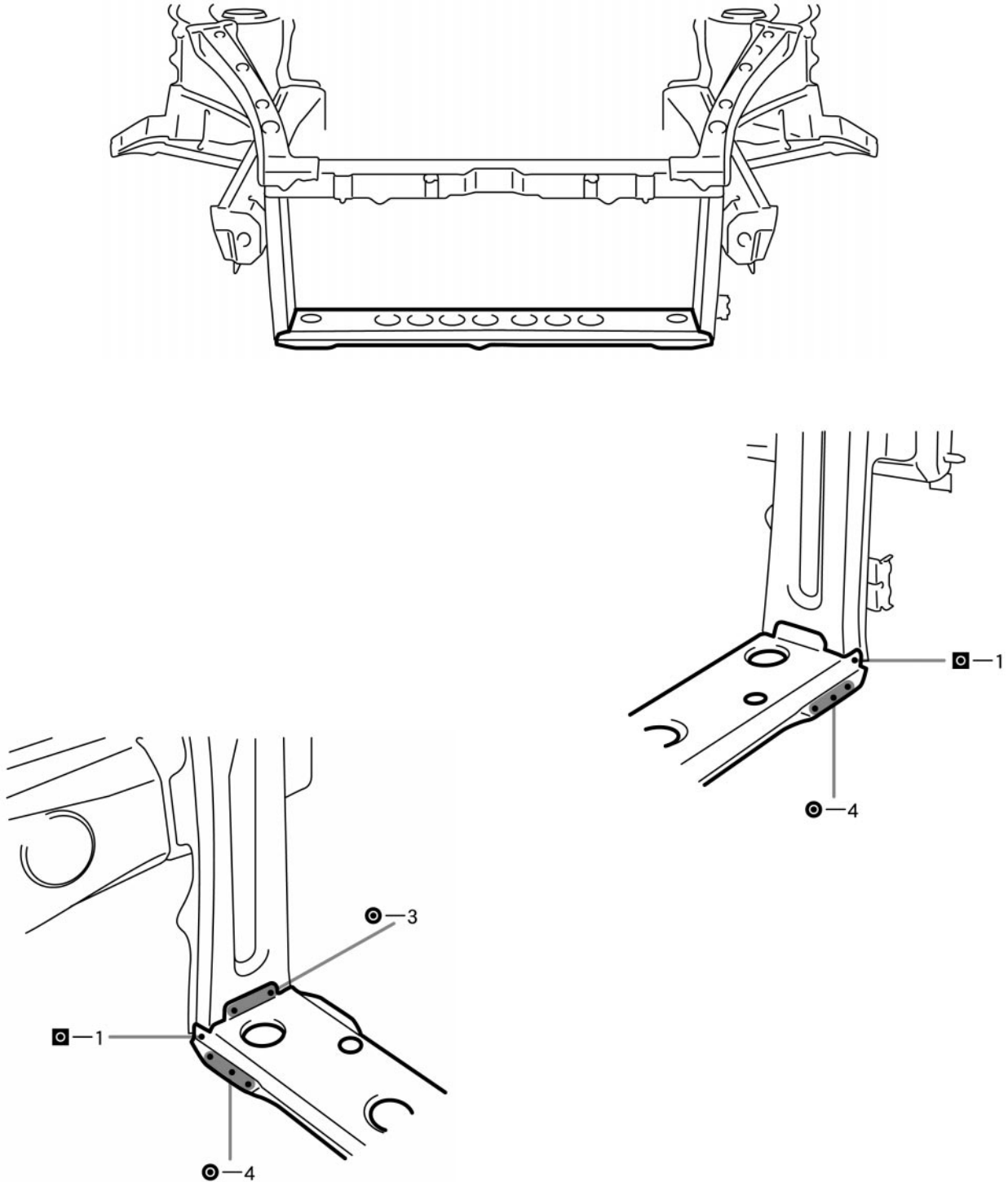


**2. INSTALL FRONT CROSSMEMBER**

- (a) Temporarily install the new parts and measure each part in accordance with the body dimension diagram.

HINT:

First install the hood lock support.



- 
3. MEASURING THE FRONT LUGGAGE COMPARTMENT DIMENSIONS (See page BP-95)
  4. MEASURING THE UNDER BODY DIMENSIONS (See page BP-95)
  5. APPLYING ANTI-RUST AGENT
    - (a) After applying the top coat layer, apply the anti-rust agent to the inside of the necked section structural weld spots.