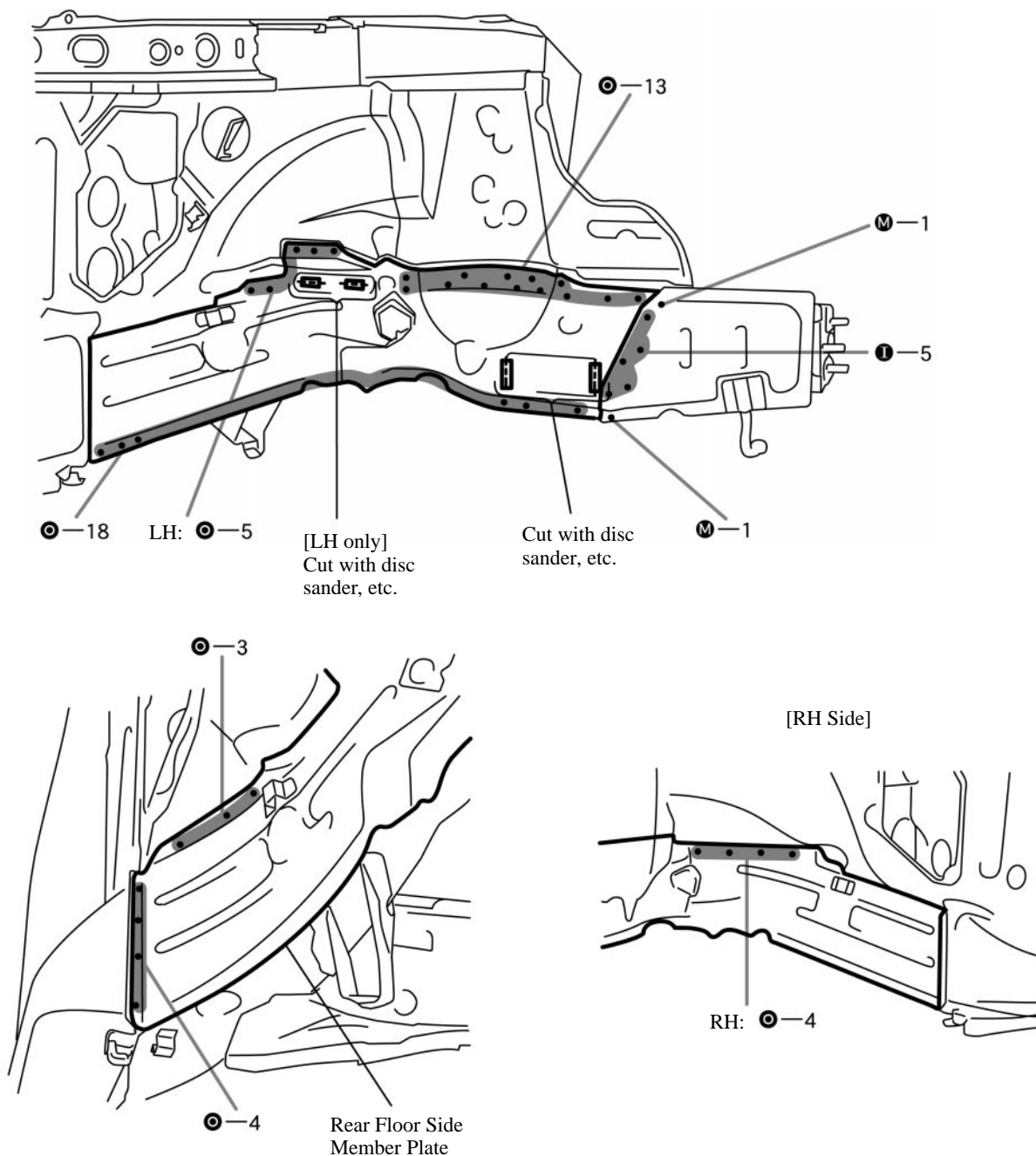
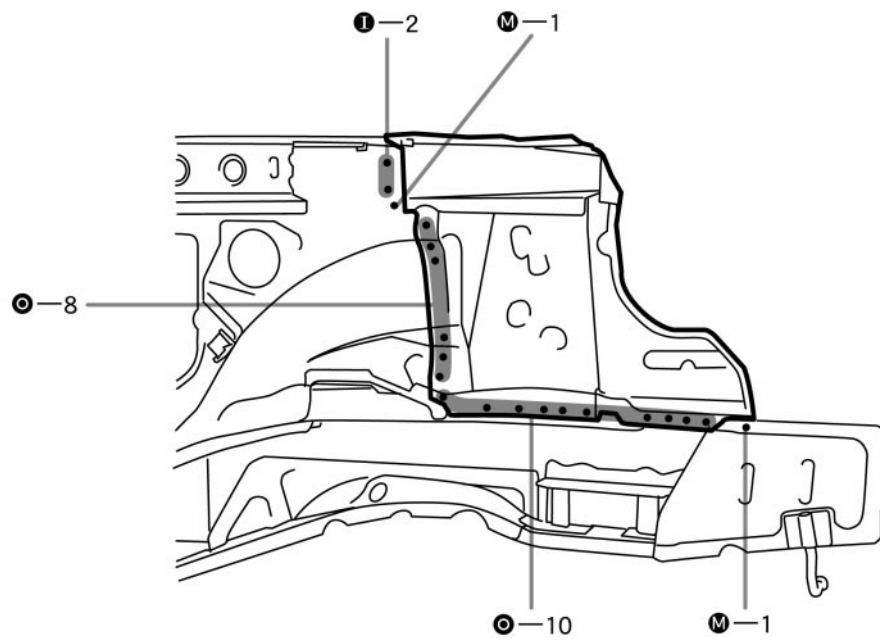
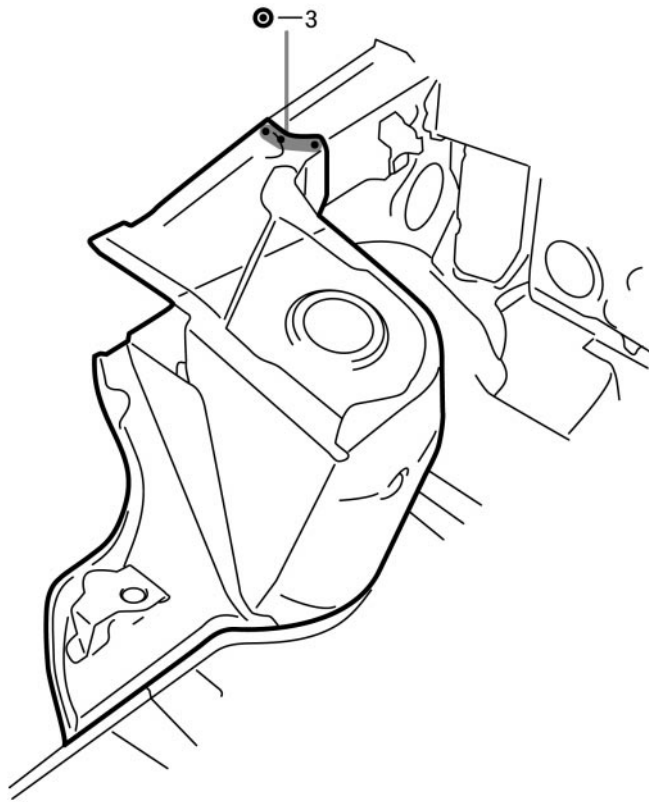


# REAR SEAT BACK HINGE BRACKET (ASSY)

## REPLACEMENT

1. REMOVE FRAME REAR UPPER CROSSMEMBER (See page BP-62)
2. REMOVE SIDE PANEL NO.4 REINFORCEMENT (See page BP-51)
3. REMOVE REAR SEAT BACK HINGE BRACKET
  - (a) After removing the rear floor side member plate, remove the rear seat back hinge bracket.



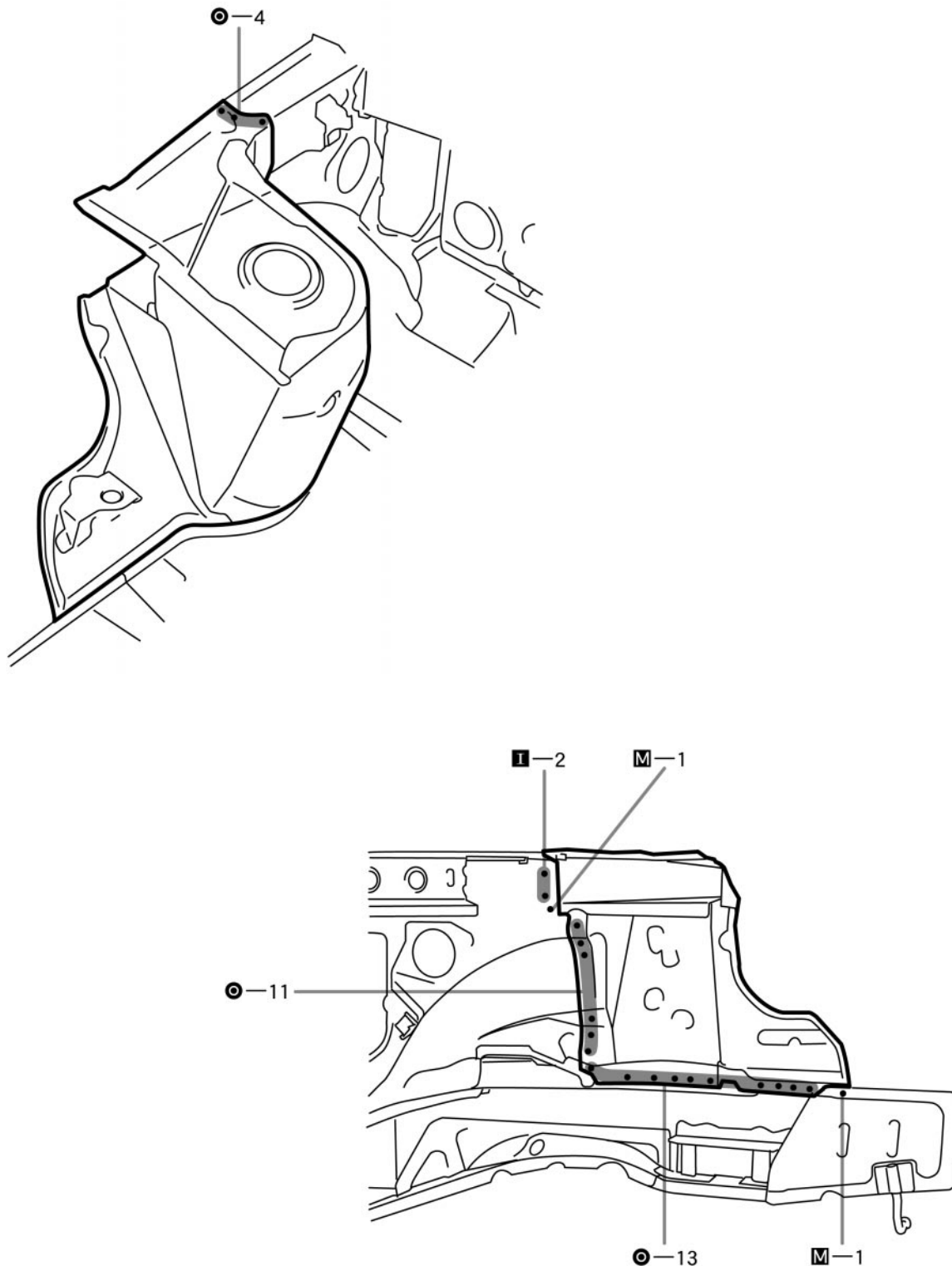


**4. INSTALL REAR SEAT BACK HINGE BRACKET**

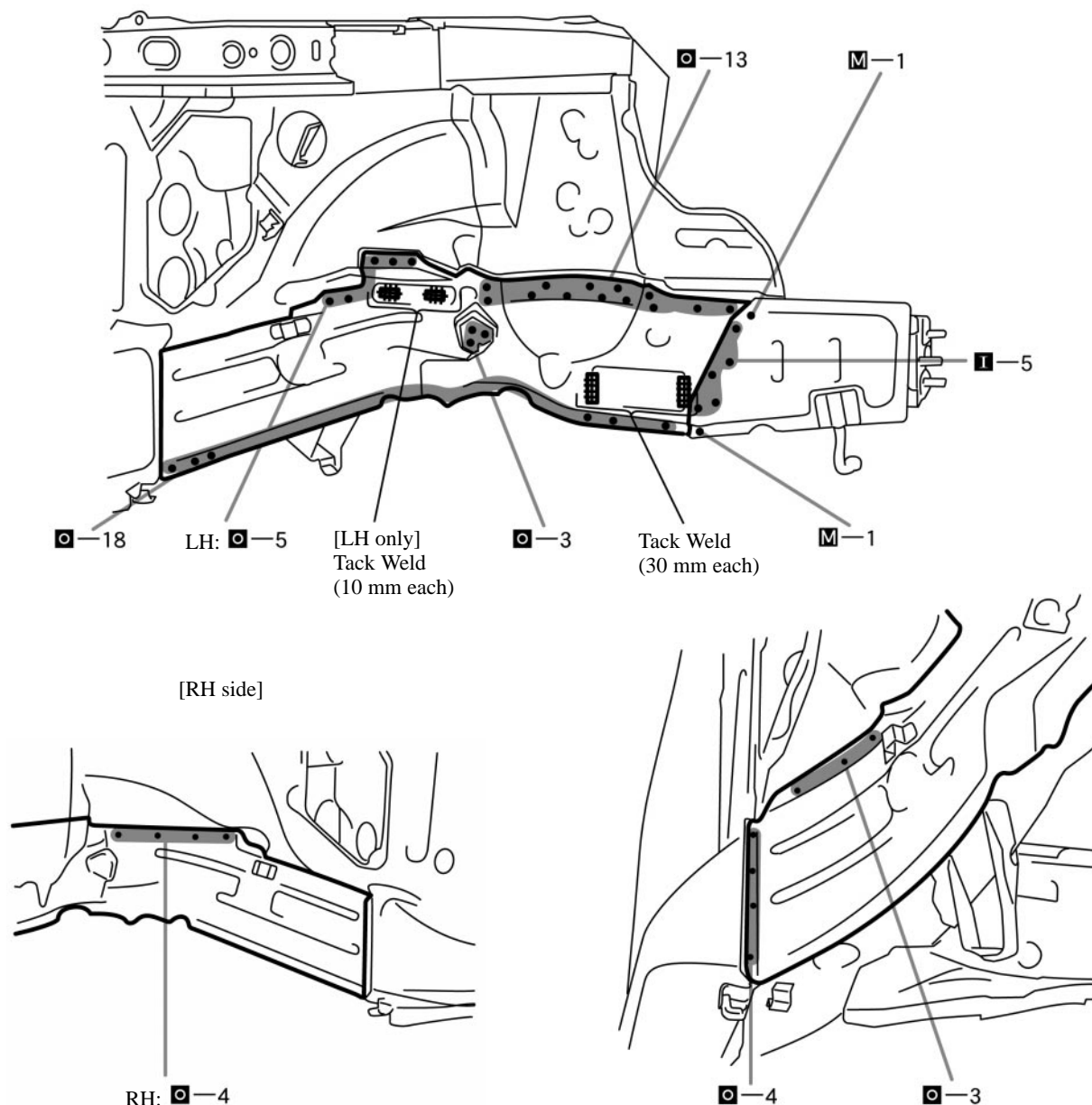
- (a) Temporarily install the new parts and measure each part in accordance with the body dimension diagram.

HINT:

Measurements must be accurate with the body dimension diagram, as this affects the rear wheel alignment.



mm	in.
10	0.39
30	1.18



F10864A

5. MEASURING THE UNDER BODY DIMENSIONS (See page BP-95)
6. MEASURING THE ENGINE COMPARTMENT DIMENSIONS (See page BP-95)
7. INSTALL SIDE PANEL NO.4 REINFORCEMENT (See page BP-52)
8. INSTALL FRAME REAR UPPER CROSSMEMBER (See page BP-63)
9. APPLYING SEALER TO THE ENGINE COMPARTMENT (See page PC-1)
10. APPLYING UNDER COATING (See page PC-6)
11. APPLYING ANTI-RUST AGENT
  - (a) After applying the top coat layer, apply the anti-rust agent to the inside of the necked section structural weld spots.