

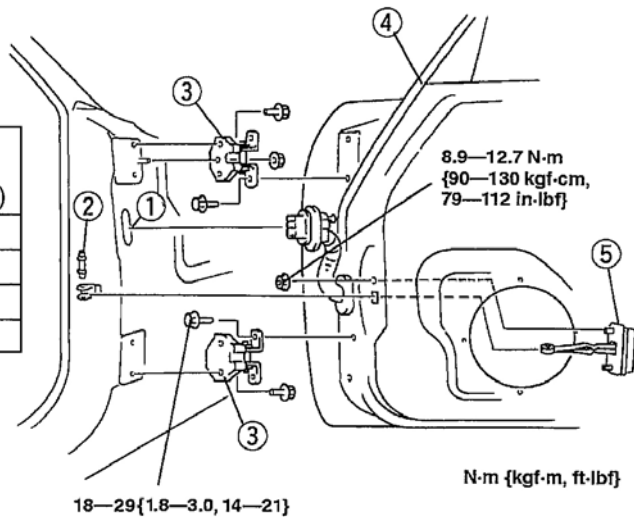
2005 ACCESSORIES & EQUIPMENT

Doors And Liftgate - MX-5 Miata

DOOR REMOVAL/INSTALLATION

1. Disconnect the negative battery cable.
2. Remove the front fender panel. (See **FRONT FENDER PANEL REMOVAL/INSTALLATION** .)
3. Remove the door speaker. (See **DOOR SPEAKER REMOVAL/INSTALLATION** .)
4. Remove in the order indicated in the table.

1	Connector (See Connector Removal Note) (See Connector Installation Note)
2	Checker pin
3	Door hinge
4	Door
5	Checker



G03638691

Fig. 1: Removing Door - With Torque Specifications
Courtesy of MAZDA MOTORS CORP.

5. Install in the reverse order of removal.
6. Adjust the door. (See **DOOR ADJUSTMENT**.)

CONNECTOR REMOVAL NOTE

1. Pull the pin out.

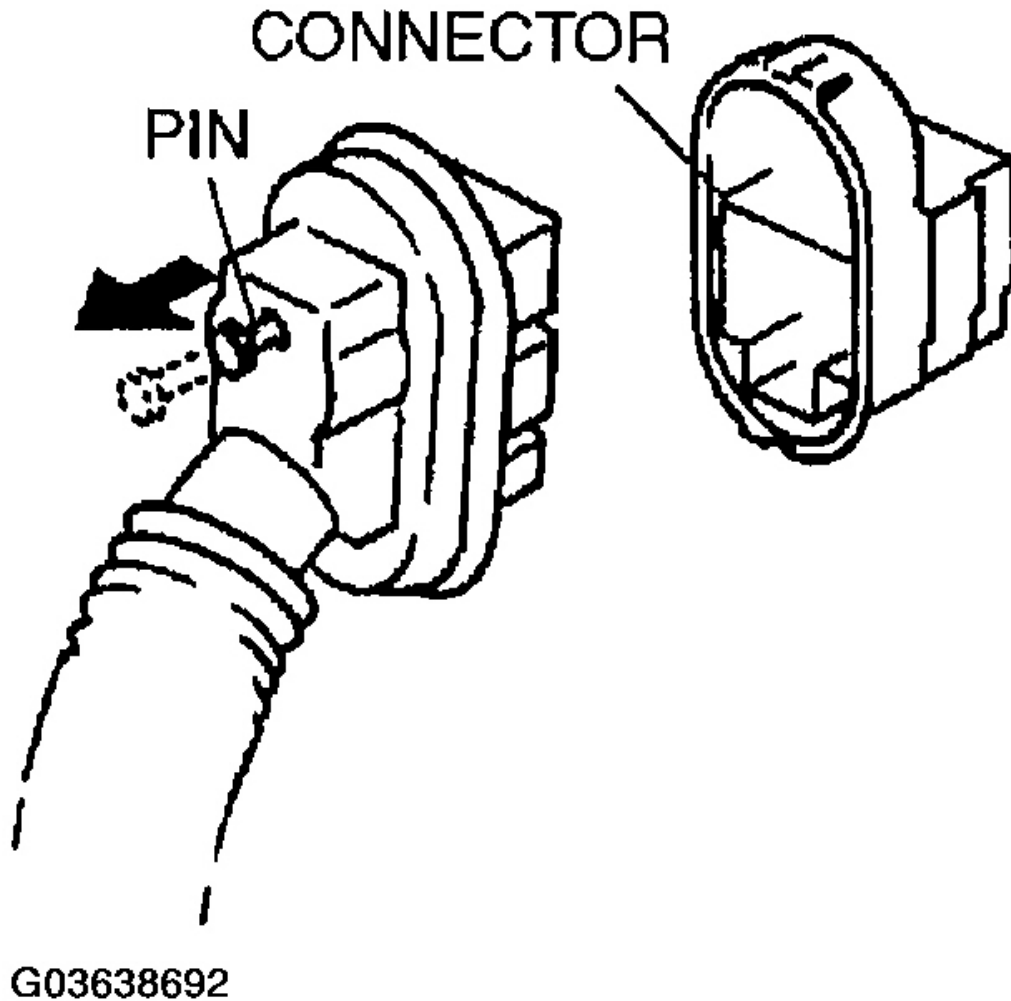


Fig. 2: Removing Connector
Courtesy of MAZDA MOTORS CORP.

CONNECTOR INSTALLATION NOTE

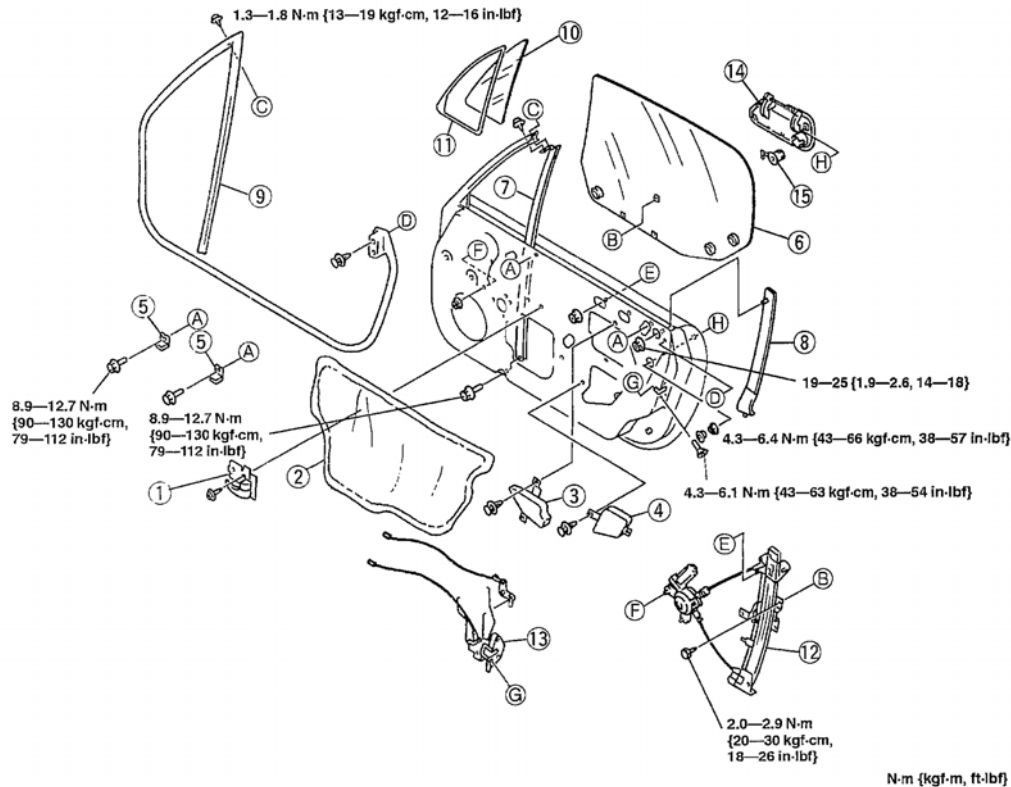
1. Push the pin until it stops.
2. Connect the connector.
3. Repush the pin until it stops and locks the connector.

DOOR DISASSEMBLY/ASSEMBLY

2005 Mazda MX-5 Miata

2005 ACCESSORIES & EQUIPMENT Doors And Liftgate - MX-5 Miata

1. Lower or raise the front door glass so that the distance from the top of the front door glass at the molding is **225 mm {8.86 in}** .
2. Disconnect the negative battery cable.
3. Remove the door trim. (See **DOOR TRIM REMOVAL/INSTALLATION** .)
4. Disassemble in the order indicated in the table.



1	Inner handle
2	Door screen
3	Pad A
4	Pad B
5	Glass stopper
6	Door glass
7	Front glass guide
8	Rear glass guide

9	Door weatherstrip
10	Door quarter glass
11	Door quarter glass weatherstrip
12	Power window regulator
13	Door lock
14	Outer handle
15	Door key cylinder

G03638693

Fig. 3: Disassembling Door - With Torque Specifications
 Courtesy of MAZDA MOTORS CORP.

5. Assemble in the reverse order of disassembly.
6. Adjust the door glass. (See **DOOR GLASS ADJUSTMENT** .)

DOOR ADJUSTMENT

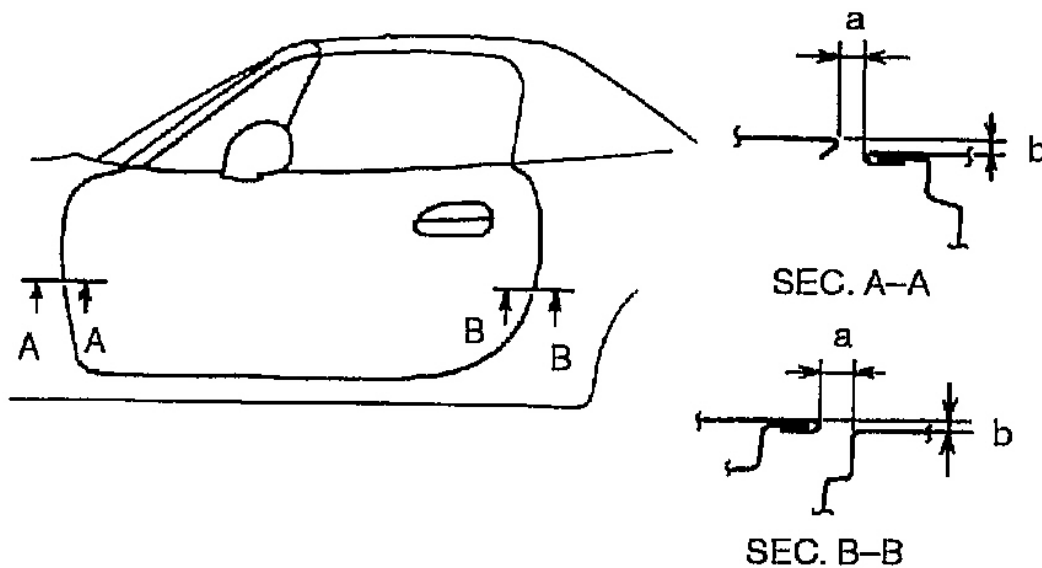
1. Measure the clearance between the door and body.
 - If not as specified, loosen the door hinge installation bolts or the door lock striker installation screws, and reposition the door.

Clearance

a:4.0-6.0 mm {0.16-0.23 in}

b:-1.0-1.0 mm {-0.03-0.03 in}

2. Tighten the bolts or screws.



G03638694

Fig. 4: Adjusting Door
Courtesy of MAZDA MOTORS CORP.